

# TH-9799 SIAM FORESTRY CO., LTD

## SURVEILLANCE AUDIT#2

21 – 26 MAY 2024



## THE SIAM FORESTRY CO.,LTD

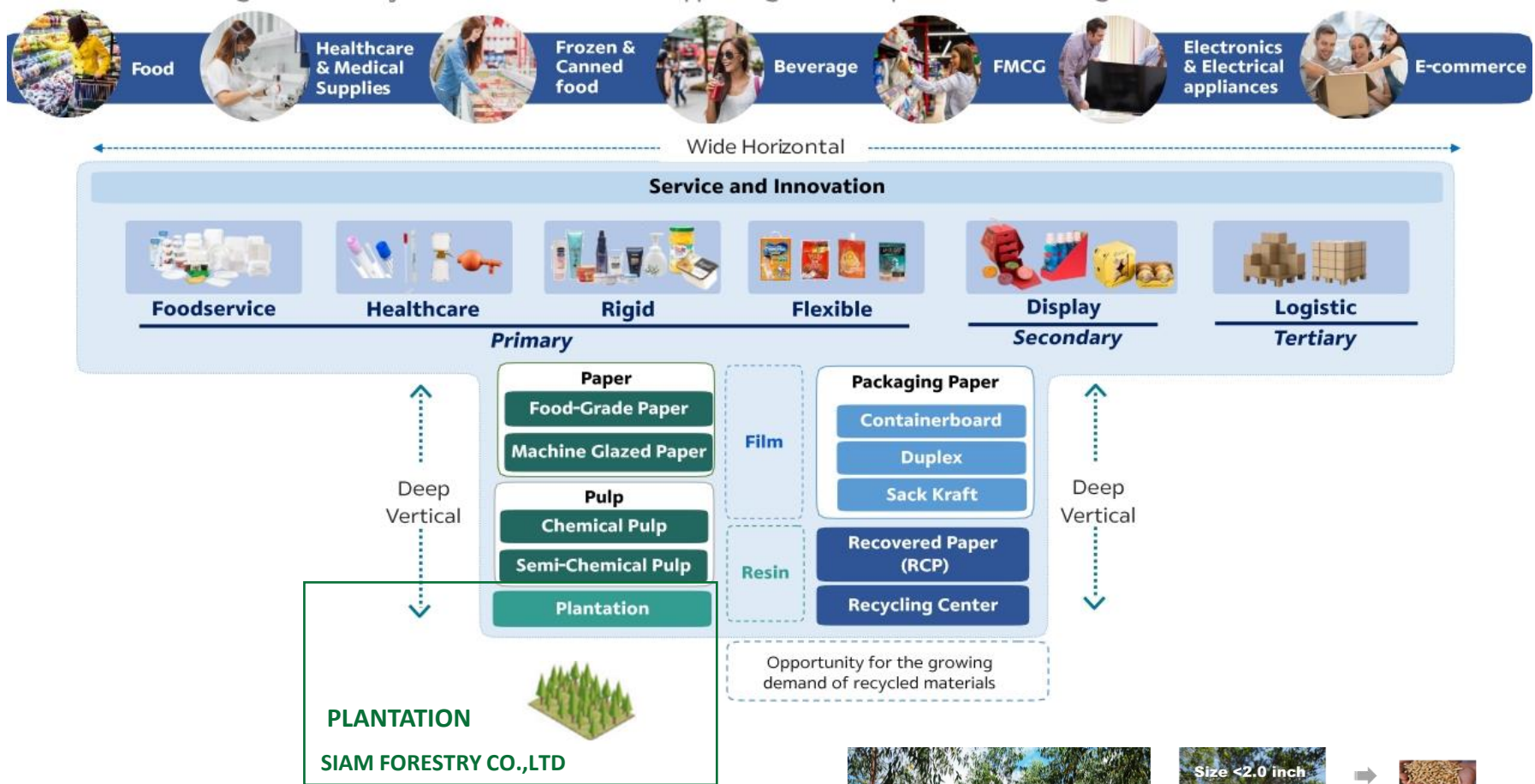
Forest Management of Eucalyptus plantation in Thailand for the production of Eucalyptus hardwood timber. The SGS Forest Management Standard (AD33) for Thailand ,Version 07 of 2019 (24 July 2023 – 23 July 2028)





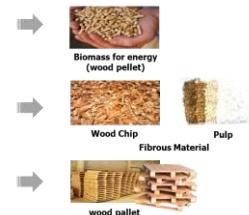
# FORESTRY BUSINESS FOR SUSTAINABILITY

- **SIAM FORESTRY Co.,Ltd** has implemented “**SUSTAINABLE VALUE CHAIN**” by Customers Experience Creation, the Innovation and Technology, as well as the Product Stewardship.



“FORESTRY BUSINESS FOR SUSTAINABILITY”

**FOREST** *The Heart of economy*  
**SUSTAINABLE RESOURCE**

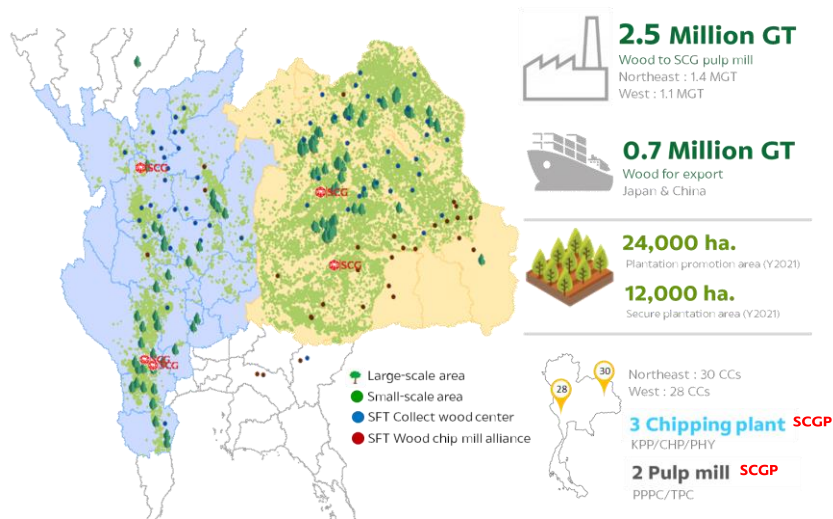


# FORESTRY BUSINESS FOR SUSTAINABILITY

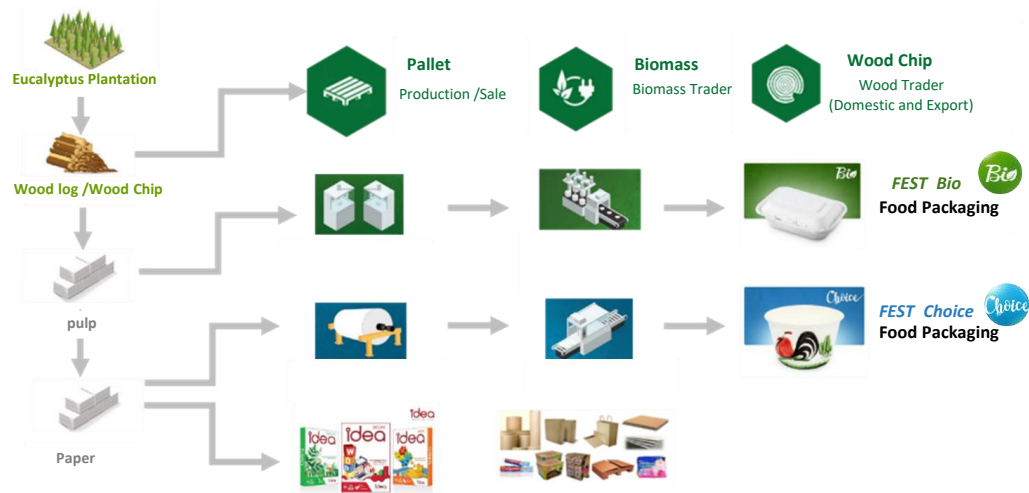
- SIAM FORESTRY Co.,Ltd has implemented “SUSTAINABLE VALUE CHAIN” by Customers Experience Creation, the Innovation and Technology, as well as the Product Stewardship.

## “SUSTAINABLE VALUE CHAIN of FORESTRY BUSINESS”

### Scope and location



### Products from Eucalyptus in SCGP, Packaging Business



### Products from Eucalyptus in Siam Forestry Co.,Ltd.

#### “PRODUCT , SERVICE and SOLUTION”



#### Land Solution :

- SCGP Investment (Land Rental 10-15 yrs.)
- Joint Venture
- Consulting

#### Environment :

- Reducing utilization from Forest.
- Reducing deforestation.
- Increasing O<sub>2</sub> .



Controlled Wood



SLIMF GROUP



PLANTATION

# THE SIAM FORESTRY CO.,LTD

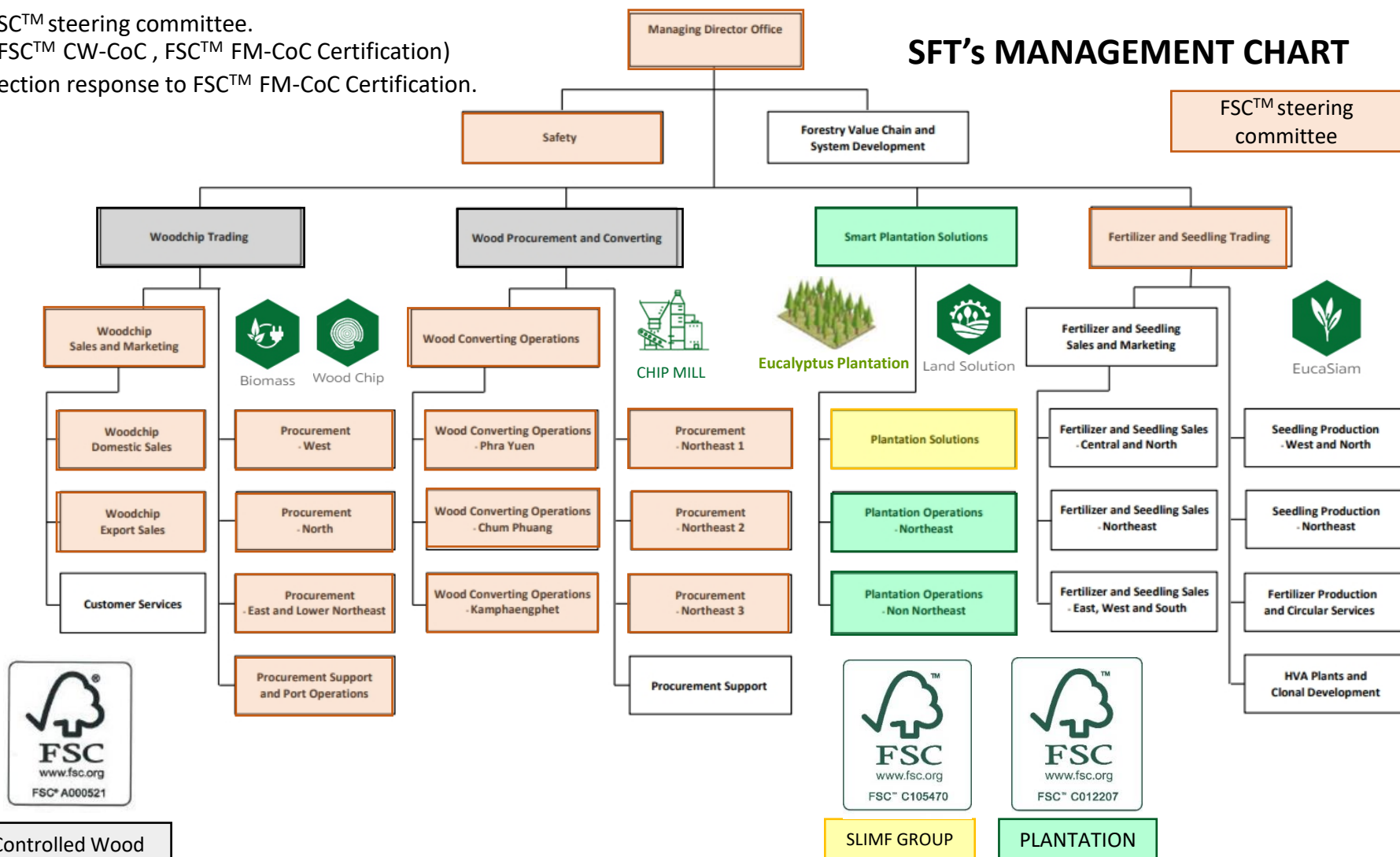
Forest Management of Eucalyptus plantation in Thailand for the production of Eucalyptus hardwood timber. The SGS Forest Management Standard (AD33) for Thailand ,Version 07 of 2019 (24 July 2023 – 23 July 2028)

เอกสารแนบท้ายประกาศที่ 17/2564

วันที่มีผล 1 ตุลาคม 2564

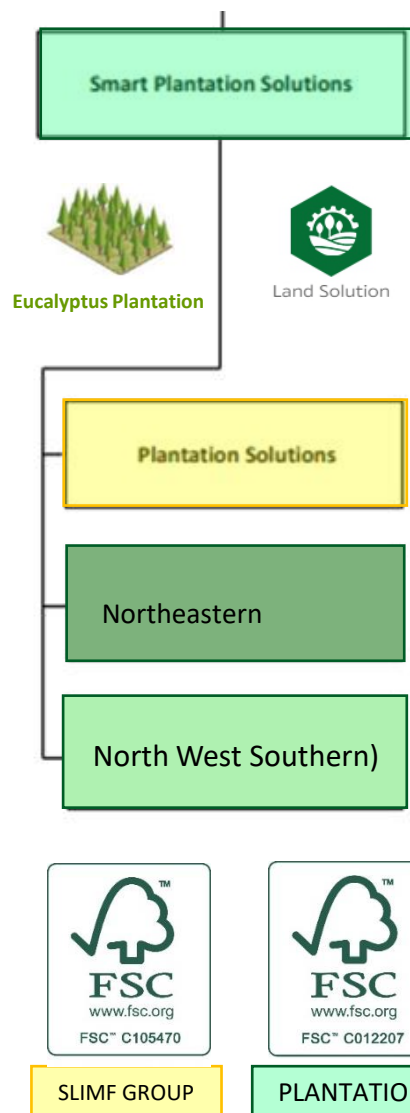
- FSC™ steering committee.  
(FSC™ CW-CoC , FSC™ FM-CoC Certification)
- Section response to FSC™ FM-CoC Certification.

## SFT's MANAGEMENT CHART





Forest Management of Eucalyptus plantation in Thailand for the production of Eucalyptus hardwood timber. The SGS Forest Management Standard (AD33) for Thailand ,Version 07 of 2019 (24 July 2023 – 23 July 2028)



## FSC™'s MANAGEMENT CHART

- Section response to FSC™ FM-CoC Certification.

SFT's employee  
223 (F:38 ,M:185)



Manpower = 102  
F : 38 ,M: 64

**North West Southern**  
(Manpower- F : Female ,M: Male )



**Section Manager**  
(M:1)

**Officer – Plantation Operations** (M:1)

**Staff - Plantation Operations** 8 (F:1 ,M:7)

**Subcontractor** 92 (F:37 ,M:55)

Manpower = 30  
F : 4 ,M: 26

**Northeastern**  
(Manpower- F : Female ,M: Male )



**Section Manager**  
(M:1)

**Officer – Plantation Operations** (M:2)

**Staff - Plantation Operations** 8 (F:2 ,M:6)

**Subcontractor** 17 (F:2 ,M:15)

\*\*\* The subcontractor is people around the plantation.

## SUSTAINABLE PLANTATION MANAGEMENT POLICY

Siam Forestry Company Limited, a subsidiary of SCG Packaging Public Company Limited (SCGP), is determined to operate a forest plantation business. To achieve the world's sustainable Development Goals (SDGs) by Plantation Solution to create satisfaction for customers and stakeholders with awareness of the importance of community / society, environment, occupational health and safety Therefore, a sustainable plantation management policy has been established. According to the principles and standards of FSC™ (Forest Stewardship Council) as follows

### "Plantation planting, develops the community, and decrease the pollution"

For achieves success operating sustainable plantation then set the ways as follow

1. **Decent work and economic growth** will require employment in the areas surrounding the plantation plots. Gender equality and employees, contractors and related parties Carry out activities of the plantation Must perform all activities in accordance with the principle and requirements according to FSC™ standards and must have good health and well-being.
2. **The land setting for plantation**, follow administration plantation system will have permanently must applying real estate right, correctly follow mark.
3. **Proceeding activity of plantation** system at emphasize to gain 3 sustainable benefits are including
  - 3.1 Economic, there is planning, manage, and control the constructing of plantation that give sustainable yield products, cutting and throw the wood, take care plantation after cutting straight to traditionally technical which be appropriate area, community, and environment.
  - 3.2 Social, there is an officer development/contractor, and related persons to have knowledge and ability in work practice, occupational health and safety including give a chance to local community participate in the activity of plantation by think over the right of the participant is proportional (gain and loss), study and effect to community, resolve appropriately and fair in disagreement with community.
  - 3.3 Environment There are plans, actions, controls and measures for surveillance and prevention, environmental and the utilization of life on Land to maintain ecological balance, and biodiversity of the plantation.
4. **Internal audit for sustainable plantation administration system**, at least 1 time per a year by internal auditor for do a presentation report to sustainable plantation system's committee of company.

( Mr.Mahasan Thieravarut )  
Managing Director  
9 January 2024

\*\*\*The Siam Forestry Co.,Ltd. is certified FSC™ FM ( FSC™-C1105470 ; FSC™-C012207 )

บริษัท สยามฟอเรสทรี จำกัด  
สำนักงานใหญ่ : กรุงเทพมหานคร เลขที่ 12600  
โทรศัพท์ : 0 2646 5555 โทรสาร : 0 2647 0734  
สาขา เชียงใหม่ : 99 หมู่ 6 ซอยเทศบาลเมืองเชียงใหม่ ซ.เทศบาล 5/130  
โทรศัพท์ : 0 5345 5000-06 0 2460 3000 โทรสาร : 0 5345 5002  
อีเมล : scgpackaging@scg.com, fsc@scg.com, www.scgpackaging.com  
หมายเลขใบแจ้งหนี้ภาษีมูลค่าเพิ่ม : 01052000000014

The Siam Forestry Company Limited  
Head Office : 12600 Chom Chong Rd., Bangkok, Bangkok 10600, Thailand  
Tel : +66-2646-5555 Fax : +66-2647-0734  
Branch Chiang Mai : 99 Moo 6, Sangkha Rd., Wangpaib, Tha Muang,  
Kanchanaburi 71026, Thailand Tel : +66-2450-3000-20 Fax : +66-3644-5093  
E-mail : scgpackaging@scg.com, fsc@scg.com, www.scgpackaging.com  
TAX ID No. : 01052000000014

The Siam Forestry Co., Ltd., a subsidiary of SCGP, is determined to operate a forest plantation business. To achieve the SDGs by

## "PLANTATION PLANTING, DEVELOPS THE COMMUNITY, AND DECREASE THE POLLUTION"

for achieves success operating sustainable plantation then set the ways as follow ;

1. Decent work and economic growth .
2. The land setting for plantation.
3. Proceeding activity of plantation.

(Economic, Social and Environment)

4. Internal audit for sustainable plantation administration system.



SLIMF GROUP



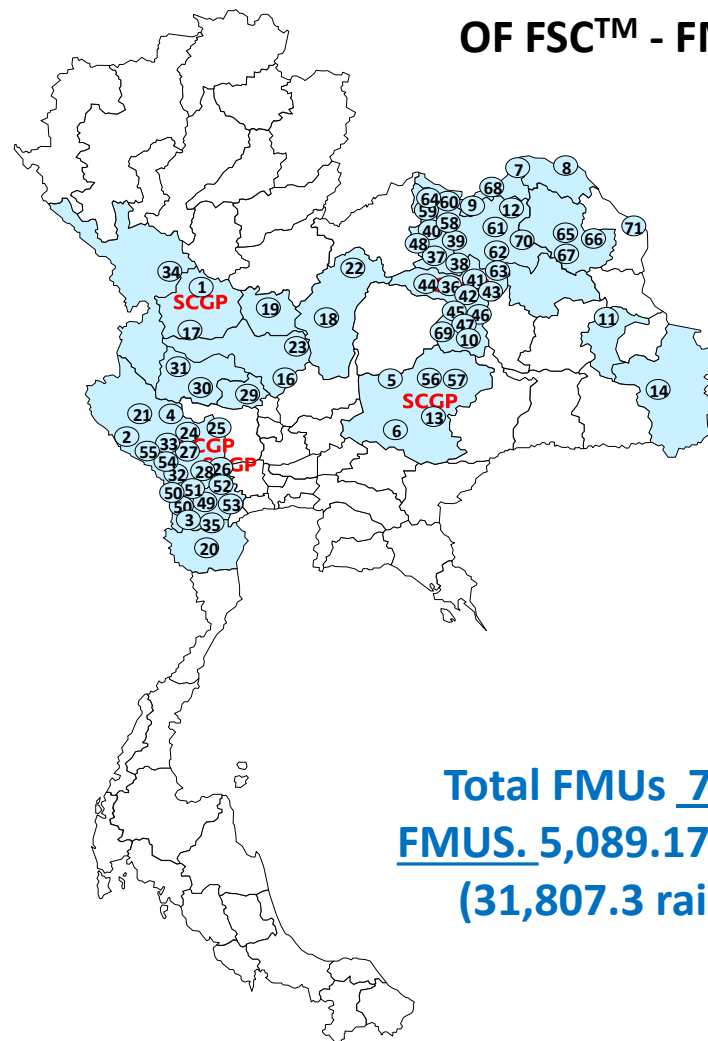
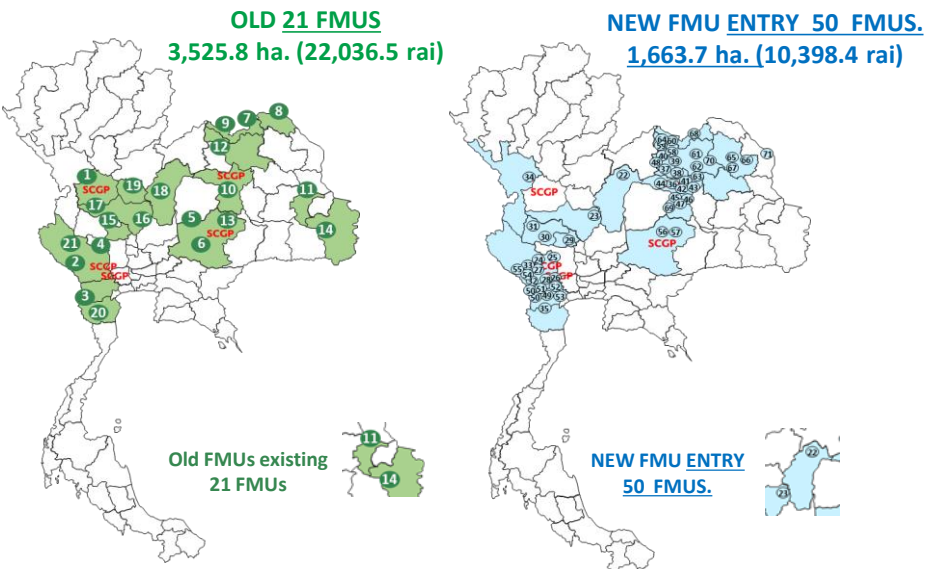
PLANTATION



# THE SIAM FORESTRY CO.,LTD

Forest Management of Eucalyptus plantation in Thailand for the production of Eucalyptus hardwood timber. The SGS Forest Management Standard (AD33) for Thailand ,Version 07 of 2019 (24 July 2023 – 23 July 2028)

## TOTAL FOREST MANAGEMENT UNITS OF FSC™ - FM.



Total Areas for FSC plantation in 2021-24

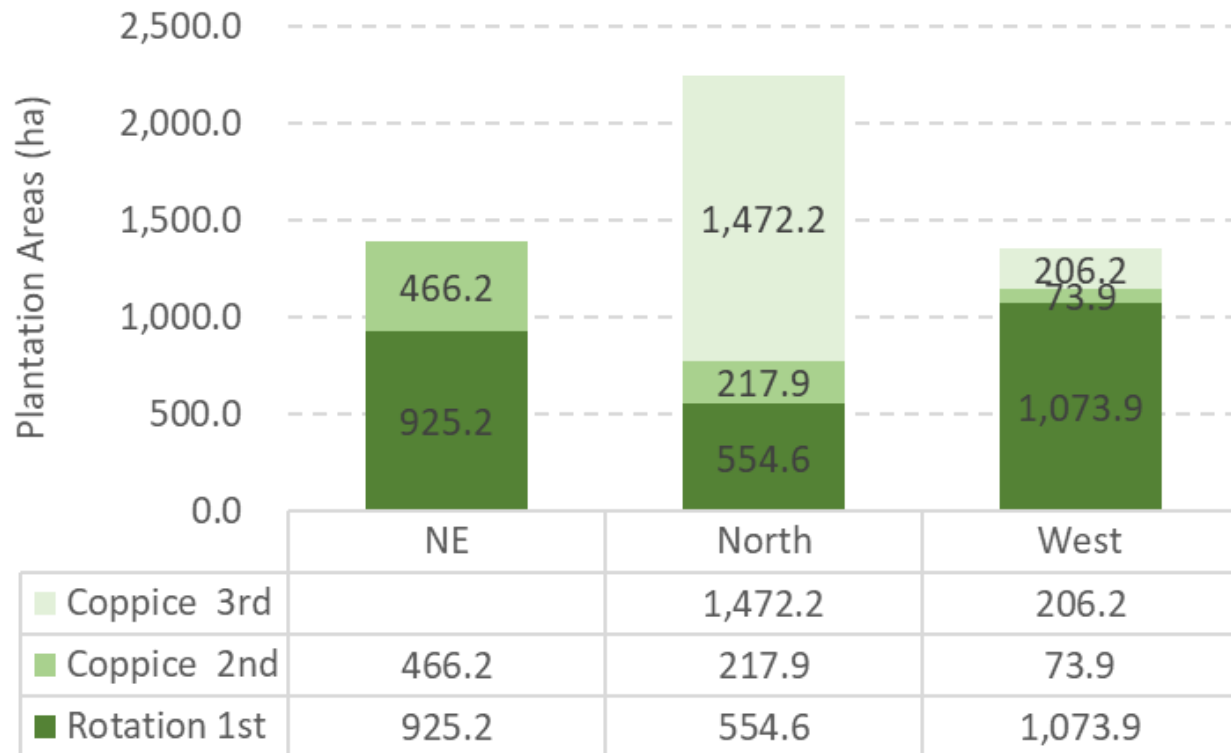
Register FSC-FM	<2021 (ha)	2022 (ha)	2023 (ha)	2024 (ha)
Old	2,121.9	2,121.9	2,324.0	3,525.8
New	0.0	202.1	1,201.8	1,663.7
Cancel	0.0	0.0	0.0	100.4
<b>Acc.</b>	<b>2,121.9</b>	<b>2,324.0</b>	<b>3,525.8</b>	<b>5,089.2</b>

- OLD 21 FMUS 3,525.8 ha. (22,036.5 rai)
- NEW FMU ENTRY 50 FMUS. 1,663.7 ha. (10,398.4 rai)

# THE SIAM FORESTRY CO.,LTD

Forest Management of Eucalyptus plantation in Thailand for the production of Eucalyptus hardwood timber. The SGS Forest Management Standard (AD33) for Thailand ,Version 07 of 2019 (24 July 2023 – 23 July 2028)

## Plantation type in 70 FMU by Zone



- Zone West and North areas is 3,598.7 ha (72.1%)
- Zone NE areas is 1,391.4 ha (27.9%)



● ● Coppice 2<sup>nd</sup> , 3<sup>rd</sup> : Kamphengphet .

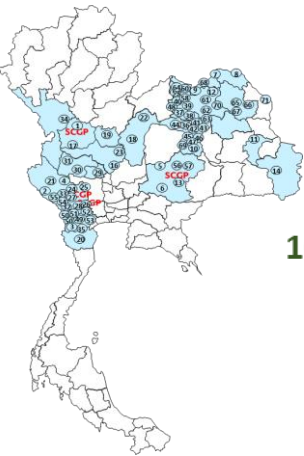


● 1<sup>st</sup> Rotation : Porjareanpon.

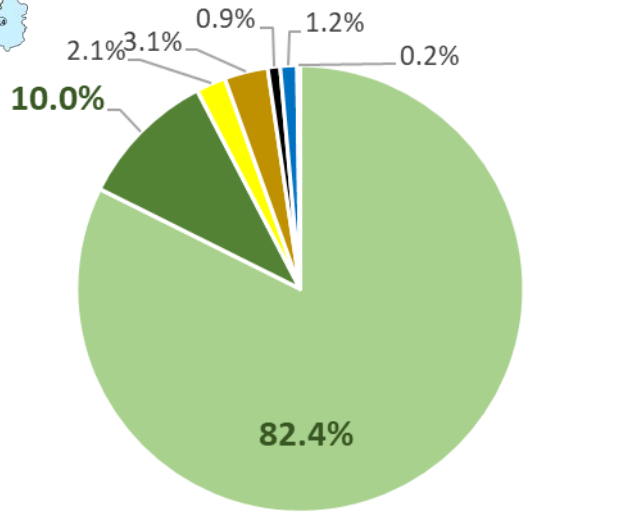


# THE SIAM FORESTRY CO.,LTD

Forest Management of Eucalyptus plantation in Thailand for the production of Eucalyptus hardwood timber. The SGS Forest Management Standard (AD33) for Thailand ,Version 07 of 2019 (24 July 2023 – 23 July 2028)

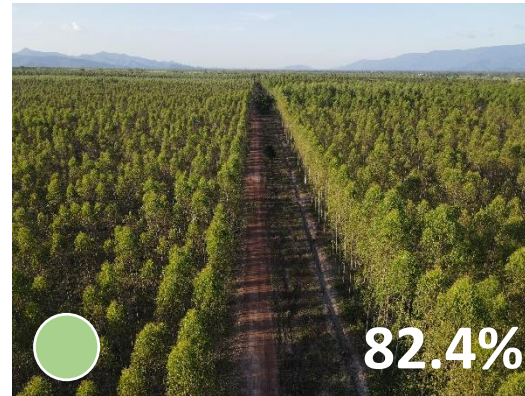


## Land use of 70 FMUs as Following :



- Eucalyptus Plantation
- Conservation Area
- Agroforestry
- Unproductive
- Research
- Pond
- Office

- Other Land use 278.19 ha (5.5%) :  
(Office ,Pond and Unproductive (Road))



82.4%

Eucalyptus Plantation 4,191.6 ha (26,197.69 rai)



10.0%

Conservation Areas 509.97 ha. (3,187.3 rai)



Secondary Mixed  
Deciduous Forest A-D



2.1%

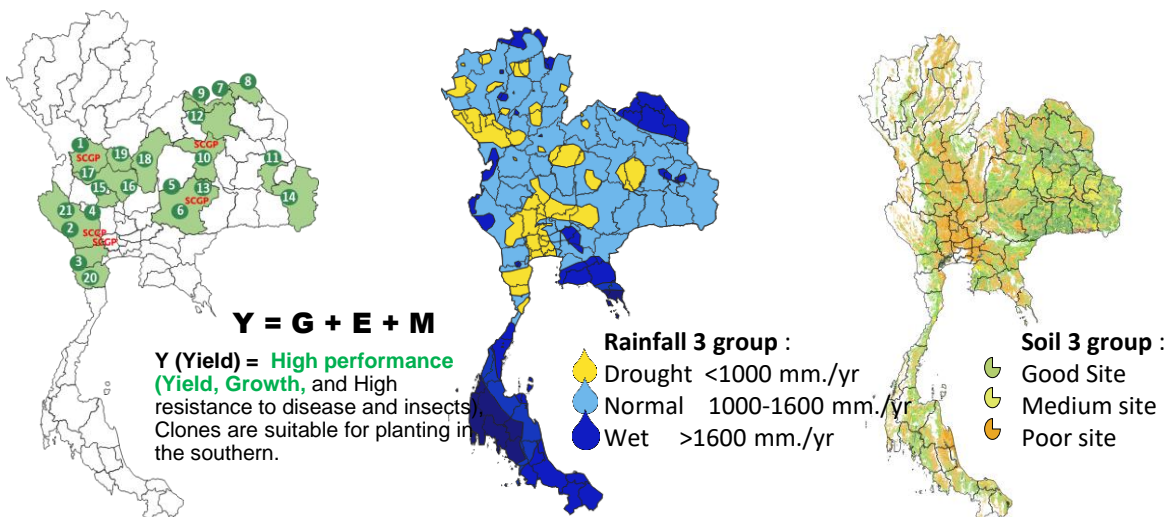
Agriculture 109.4 ha (683.6 rai) (plants rice for donate)



# THE SIAM FORESTRY CO.,LTD

Forest Management of Eucalyptus plantation in Thailand for the production of Eucalyptus hardwood timber. The SGS Forest Management Standard (AD33) for Thailand ,Version 07 of 2019 (24 July 2023 – 23 July 2028)

## Eucalyptus Plantation in 2023-24 (82.4%total FMUs):



## Eucalyptus Hybrids and Clone Existing in plantation ( 12 clone)

Hybrids	Growth	Pulp yield	Density	Plantation disease	Nursery disease	Gall insect	Site	Clone Code
C x C	xx	xx	xxx	xx	xxx	xx	Drought to normal	P6
C x U	xxx	xx	xxx	x	x	xx	Drought to normal	H4
C x P	xxx	xxx	xx	xx	xxx	xx	Normal to wet	H26,H36,H38,H46
(CxU)xU	xxx	xx	xx	xx	xx	xx	Normal to wet	H44
(CxG)x(CxP)	xx	xx	xx	xx	x	xxx	Normal to wet	H32,H42
(PxC)xC	xxx	xx	xx	xx	xx	xxx	Drought to normal	613R1,525R1*
PxU	xxx	xxx	xx	xx	xx	xxx	Wet	617R2*

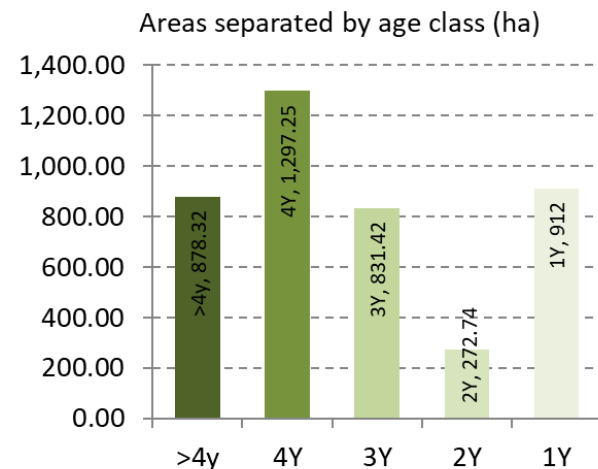
C : E. camaldulensis ,U : E. urophylla , E. pellita and G :E. grandis

X : Low ,XX :moderate and XXX : Highly

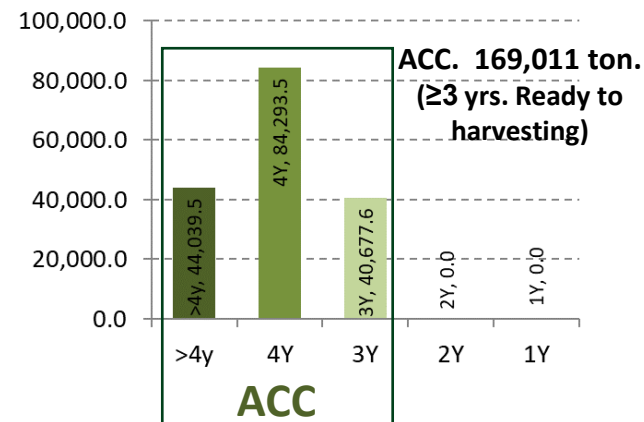
\* New coming



Areas separated by age class (ha)  
**(4,191.6 ha)**



## Summary FSC Annual Allowable Cutting (Ton)



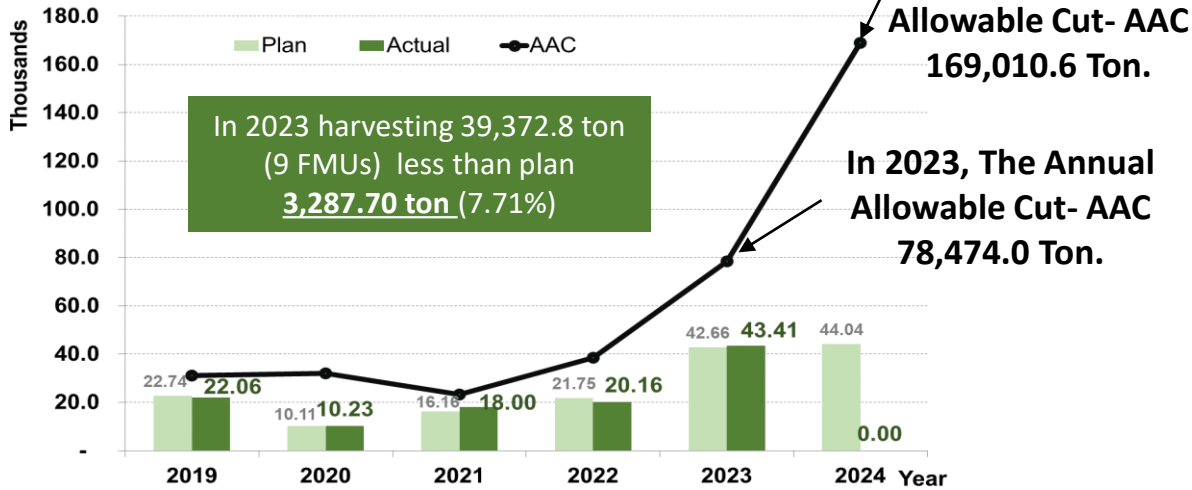


# THE SIAM FORESTRY CO.,LTD

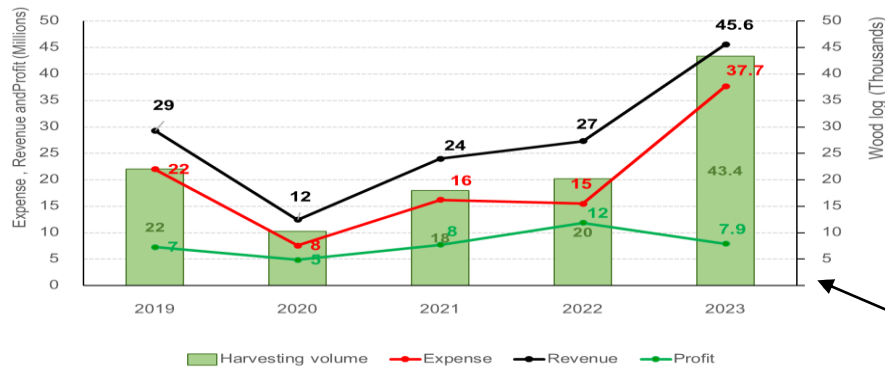
Forest Management of Eucalyptus plantation in Thailand for the production of Eucalyptus hardwood timber. The SGS Forest Management Standard (AD33) for Thailand ,Version 07 of 2019 (24 July 2023 – 23 July 2028)

- Updated progress activity for **Economy 2023 -2024.**

Display **Harvesting (Wood log)** in **2019- 2024** .



Display **Wood log harvesting and financial 2019-2021**



**In 2023 :**  
**Harvesting volume 43,413.7 (Ton)**  
**Revenue 45.6 Mb and Expense 37.69 Mb.**  
**Profit 7.91 Mb.**

QA Log size index





# THE SIAM FORESTRY CO.,LTD

Forest Management of Eucalyptus plantation in Thailand for the production of Eucalyptus hardwood timber. The SGS Forest Management Standard (AD33) for Thailand ,Version 07 of 2019 (24 July 2023 – 23 July 2028)



PLANTATION



TRANSPORTATION



CHIP MILL

- Updated progress activity for

## Economy 2023 -2024

### Economy :

Economic, there is planning, manage, and control the constructing of plantation that give sustainable yield products, cutting and throw the wood, take care plantation after cutting straight to traditionally technical which be appropriate area, community, and environment.

- Application of the suitable silvicultural system in plantation management for each area (Clone and Site).
- Intensives plantation management and technology application for the efficiency.

- Application of the suitable silvicultural system in plantation management



Intensive site preparation by ripping and mounding for increase survival rate



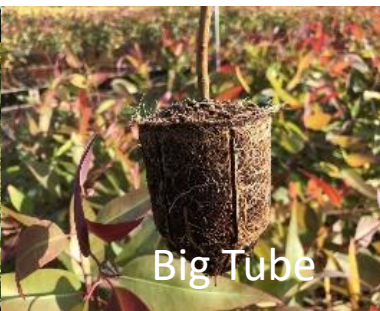
Planting in the dry season when come to rainy season continuous growth.



Planting in the dry season



Apply technology for increasing efficiency and reduce cost

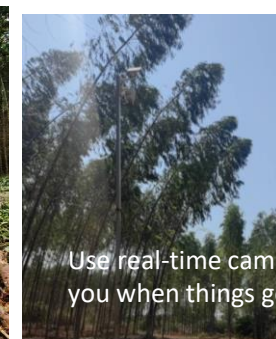


Big Tube

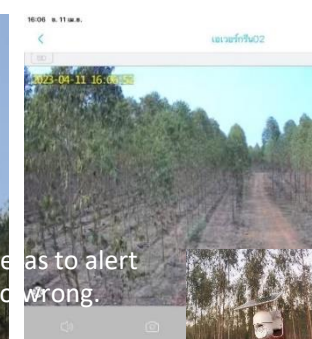
Planting in the dry season and Increase survival rate



Apply machine for increase productivity of harvesting.



Use real-time camera as to alert you when things go wrong.





# THE SIAM FORESTRY CO.,LTD

Forest Management of Eucalyptus plantation in Thailand for the production of Eucalyptus hardwood timber. The SGS Forest Management Standard (AD33) for Thailand ,Version 07 of 2019 (24 July 2023 – 23 July 2028)



PLANTATION



TRANSPORTATION

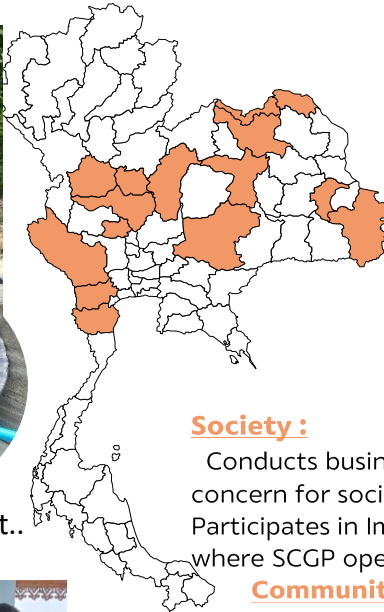


CHIP MILL

- Updated progress activity for Environment and **Social 2023 -2024** **Society :** **Community investment and donation.**



-Donate a water pump and Equipment..



## **Society :**

Conducts business with ethic and concern for social responsibility. Participates in Improving the quality of life where SCGP operates.

## **Community investment and donation.**

- Labor practices and human rights.
- Human resources and human capital development.
- Health and safety.
- Stakeholder engagement.



-Donate a Computer (PC) and equipment.



- Support **traditional** and **donation** for stockholder around the plantation.





# THE SIAM FORESTRY CO.,LTD

Forest Management of Eucalyptus plantation in Thailand for the production of Eucalyptus hardwood timber. The SGS Forest Management Standard (AD33) for Thailand ,Version 07 of 2019 (24 July 2023 – 23 July 2028)



PLANTATION

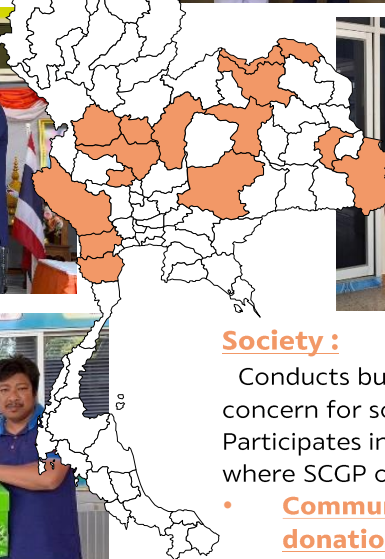


TRANSPORTATION



CHIP MILL

- Updated progress activity for Environment and **Social 2023-2024** **Society :** **Community investment and donation.**



## **Society :**

Conducts business with ethic and concern for social responsibility. Participates in Improving the quality of life where SCGP operates.

- **Community investment and donation.**
- Labor practices and human rights.
- Human resources and human capital development.
- Health and safety.
- Stakeholder engagement.



- Support **traditional** and **donation** for stockholder around the plantation.



# THE SIAM FORESTRY CO.,LTD

Forest Management of Eucalyptus plantation in Thailand for the production of Eucalyptus hardwood timber. The SGS Forest Management Standard (AD33) for Thailand ,Version 07 of 2019 (24 July 2023 – 23 July 2028)



- Updated progress activity for Environment and **Social 2023 -2024**

## • Stakeholder engagement. Society :

**Society :**

- Conducts business with ethic and concern for social responsibility. Participates in Improving the quality of life where SCGP operates.
- Community investment and donation.
- Labor practices and human rights.
- Human resources and human capital development.
- Health and safety.
- Stakeholder engagement.**

- **Social impact evaluations** and consultation by **Interview with locals** around the plantation.



# THE SIAM FORESTRY CO.,LTD

Forest Management of Eucalyptus plantation in Thailand for the production of Eucalyptus hardwood timber. The SGS Forest Management Standard (AD33) for Thailand ,Version 07 of 2019 (24 July 2023 – 23 July 2028)

- Updated progress activity for Environment and **Social 2023 -2024**



## Society : Health and safety.



First aid training



First aid training



First aid training

- Support and provide **training for Workers** about **Health and Safety** and support annual physical examinations and build safety awareness.

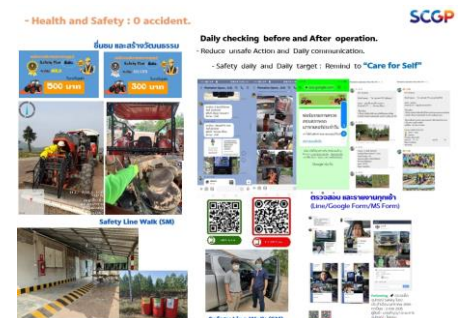
Appreciate and build a safety culture

### Society :

- Conducts business with ethic and concern for social responsibility.
- Participates in Improving the quality of life where SCGP operates.
- Community investment and donation.
- Labor practices and human rights.
- Human resources and human capital development.
- Health and safety.**
- Stakeholder engagement.



annual physical examination



- Reduce unsafe Action and Daily communication.





# THE SIAM FORESTRY CO.,LTD

Forest Management of Eucalyptus plantation in Thailand for the production of Eucalyptus hardwood timber. The SGS Forest Management Standard (AD33) for Thailand ,Version 07 of 2019 (24 July 2023 – 23 July 2028)

- Updated progress activity for Environment and **Social 2023 -2024**



**Society :** **Human resources and human capital development.**



- Support and provide training competency for subcontractors.

- Society :**
- Conducts business with ethic and concern for social responsibility. Participates in Improving the quality of life where SCGP operates.
  - Community investment and donation.
  - Labor practices and human rights.
  - Human resources and human capital development.
  - Health and safety.
  - Stakeholder engagement.





# THE SIAM FORESTRY CO.,LTD

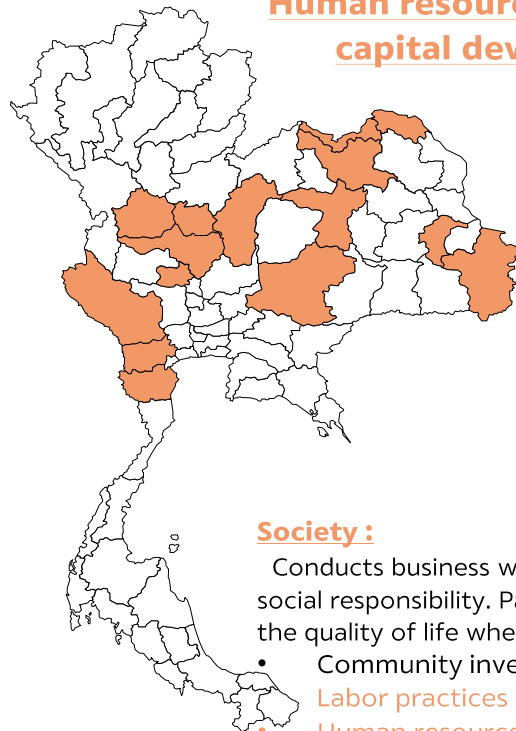
Forest Management of Eucalyptus plantation in Thailand for the production of Eucalyptus hardwood timber. The SGS Forest Management Standard (AD33) for Thailand ,Version 07 of 2019 (24 July 2023 – 23 July 2028)

- Updated progress activity for

Environment and **Social 2023 -2024**

## Society :

**Human resources and human capital development.**



## Society :

Conducts business with ethic and concern for social responsibility. Participates in Improving the quality of life where SCGP operates.

- Community investment and donation.
- **Labor practices and human rights.**
- **Human resources and human capital development.**
- Health and safety.
- Stakeholder engagement.



- Support and provide training competency for subcontractors.



- Work shop about “FSC Activity in FMU”



PLANTATION



TRANSPORTATION



CHIP MILL

# THE SIAM FORESTRY CO.,LTD

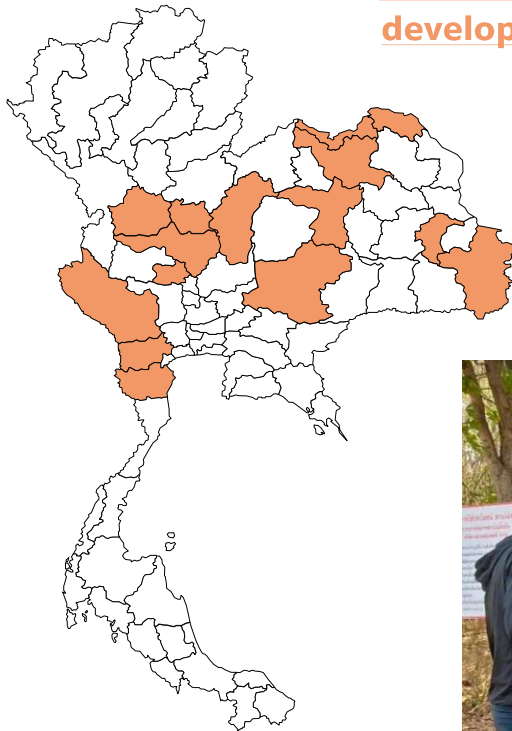
Forest Management of Eucalyptus plantation in Thailand for the production of Eucalyptus hardwood timber. The SGS Forest Management Standard (AD33) for Thailand ,Version 07 of 2019 (24 July 2023 – 23 July 2028)

- Updated progress activity for  
Environment and **Social 2023 -2024**



## Society :

Human resources and  
human capital  
development.



- Support and provide training competency for Employee about Internal Audit of Forest Management Standard



- Work shop and On-site about “Internal Audit ”



# THE SIAM FORESTRY CO.,LTD

Forest Management of Eucalyptus plantation in Thailand for the production of Eucalyptus hardwood timber. The SGS Forest Management Standard (AD33) for Thailand ,Version 07 of 2019 (24 July 2023 – 23 July 2028)

- Updated progress activity for

**Environment** and Social **2023 -2024**

## Environment :

Commits to conservation of environment and natural resources ,using resource wisely and maintaining ecological balance.

- Energy and Climate change.
- Water management.
- Waste management.
- **Biodiversity and ecosystem.**
- Environmentally friendly products and services.
- Logistics management.
- **Life on land (Protect ,restore and promote use of terrestrial ecosystems, sustainably manage forests.**

**High conservation value area (HCV) assessment.**



ลง กำแพงเพชร อ.พริกกระด้าง จ.กำแพงเพชร (FMU :Kamphaeng Ph



แปลงแปลงศกสกลชัย อ.ปากท่อ จ.ราชบุรี (FMUs :Pak t



แปลงปากท่อ อ.ปากท่อ จ.ราชบุรี (FMUs :Pak tho)



แปลงสวนผึ้ง อ.สวนผึ้ง จ.ราชบุรี (FMUs :Pak tho)



แปลงเอสเคอ อ.ดำเนินสะดวก จ.กาญจนบุรี (FMUs :Somc



แปลง KSL อ.โพธาราม จ.หนองคาย (Skylan



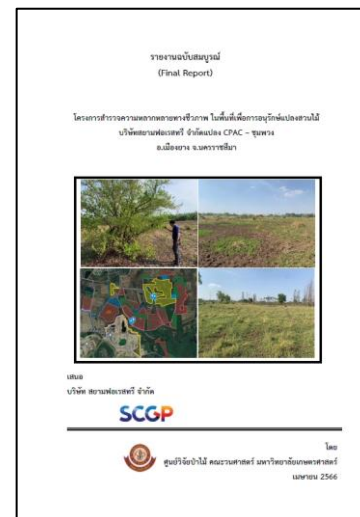
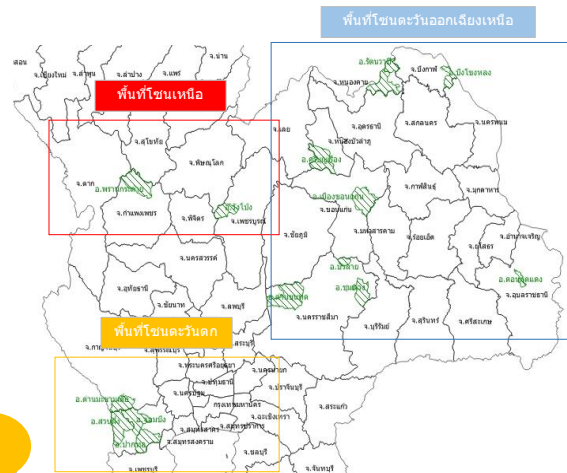
แปลงชัยยัง อ.บัวลาย จ.นครราชสีมา (Chaifying63)



## Environment :

- **Life on land (Protect ,restore and promote use of terrestrial ecosystems, sustainably manage forests.**

แผนที่ ตำแหน่งแปลง ทั้ง 3 โซน (ตะวันออกเฉียงเหนือ ,ตะวันตก และเหนือ)



**High conservation value area (HCV) assessment.**



# THE SIAM FORESTRY CO.,LTD

Forest Management of Eucalyptus plantation in Thailand for the production of Eucalyptus hardwood timber. The SGS Forest Management Standard (AD33) for Thailand ,Version 07 of 2019 (24 July 2023 – 23 July 2028)

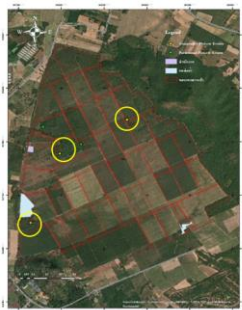
- Updated progress activity for  
**Environment** and Social **2023 -2024**



● Permanent plot (20x50 m.)



Conservation areas in  
**KPP plantation 149 ha.**



★ Permanent plot (20x50 m.)



Conservation areas in  
**Somchai K plantation 17.5 ha.**

- Increase the diversity and density of species in conservation areas and manage food and animal nests.



Nursery in **KPP plantation**



## 1. Flora Biodiversity :



## 2. Animal Biodiversity :



## 2. Insect Biodiversity :



Camera traps



Camera traps

Collect seed and produce for planting in conservation areas.



Nursery in **Somchai plantation**





# THE SIAM FORESTRY CO.,LTD

Forest Management of Eucalyptus plantation in Thailand for the production of Eucalyptus hardwood timber. The SGS Forest Management Standard (AD33) for Thailand ,Version 07 of 2019 (24 July 2023 – 23 July 2028)

- Updated progress activity for **Environment** and Social **2023 -2024**

## **Environment :**

Commits to conservation of environment and natural resources ,using resource wisely and maintaining ecological balance.

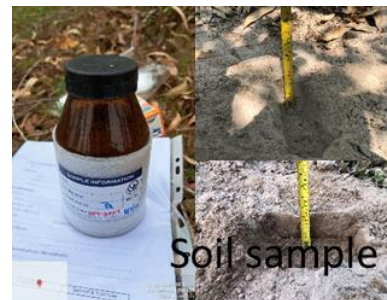
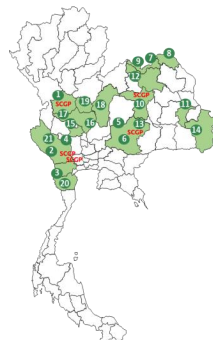
- Energy and Climate change.
- **Water management.**
- **Waste management.**
- Biodiversity and ecosystem.
- Environmentally friendly products and services.
- Logistics management.
- **Life on land (Protect ,restore and promote use of terrestrial ecosystems, sustainably manage forests.**



- **Hazardous waste identified, separated and appropriately disposed** for operate in plantation by provide Station Temporary.



- OJT Hazardous waste identified, separated.



-Collected soil and water sample sent to lab.





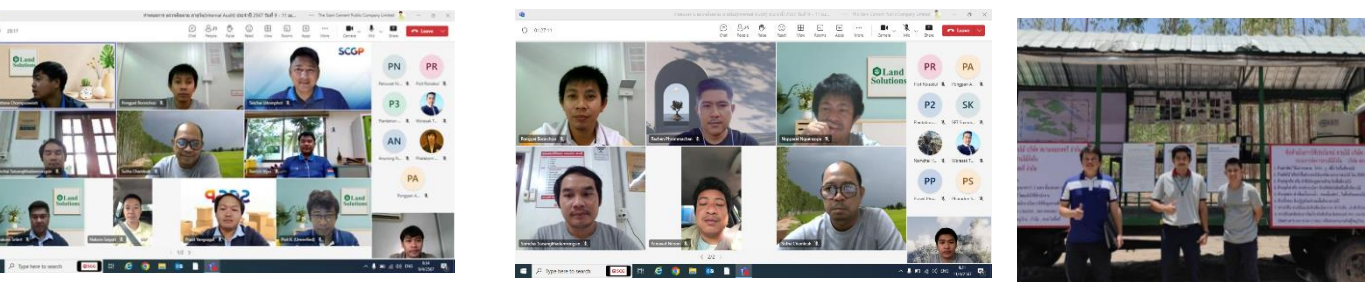
# THE SIAM FORESTRY CO.,LTD

Forest Management of Eucalyptus plantation in Thailand for the production of Eucalyptus hardwood timber. The SGS Forest Management Standard (AD33) for Thailand ,Version 07 of 2019 (24 July 2023 – 23 July 2028)

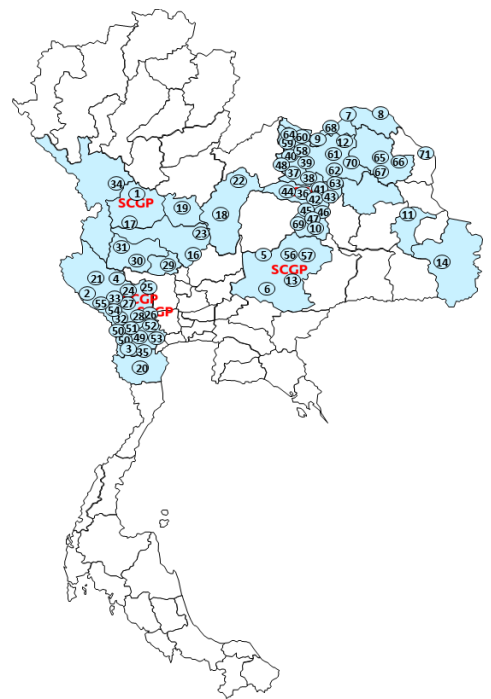


**Internal audit for sustainable plantation administration system, at least 1 time per a year by internal auditor committee.**

**TOTAL FOREST MANAGEMENT UNITS OF FSC™ - FM.**



- Internal audit on –site in 3 zone (NE ,Northern and West by FSC Committee



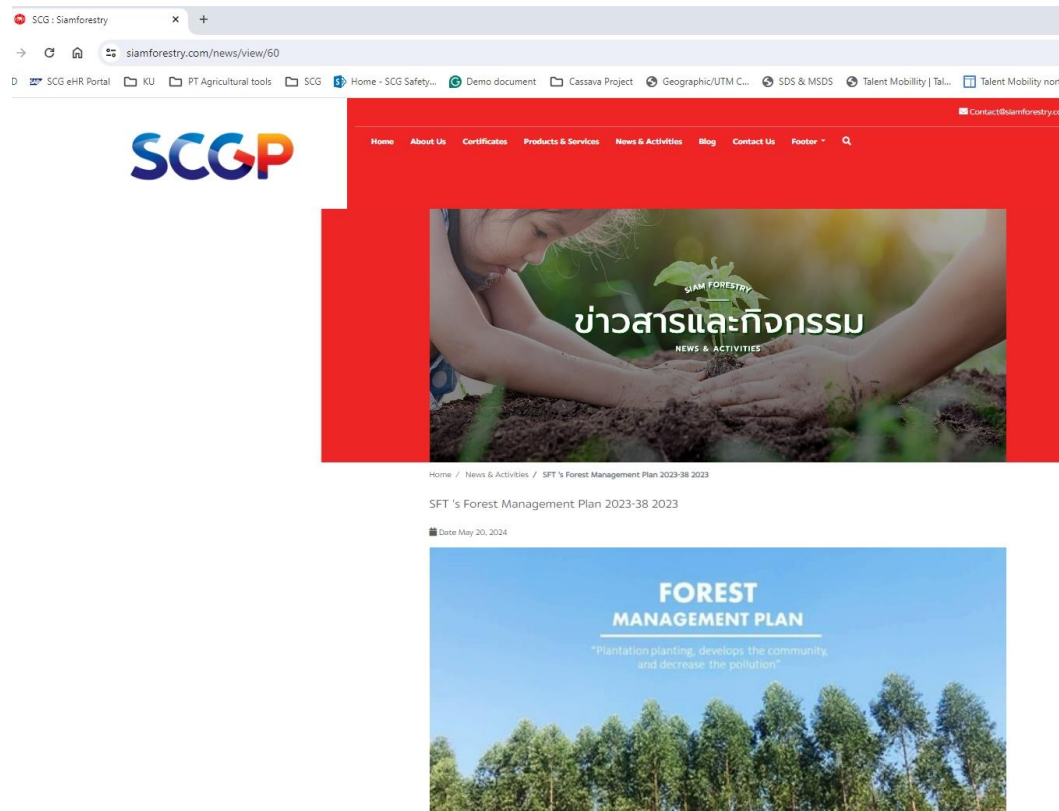
**Total FMUs 70**  
**FMUS. 5,089.17 ha.**  
**(31,807.3 rai)**

# THE SIAM FORESTRY CO.,LTD

Forest Management of Eucalyptus plantation in Thailand for the production of Eucalyptus hardwood timber. The SGS Forest Management Standard (AD33) for Thailand ,Version 07 of 2019 (24 July 2023 – 23 July 2028)

## FSC™ Management Plan for 70 FMUs

- SFT design FMP for 70 FMUs and upload on SFT's web site



<https://www.siamforestry.com/news/view/60>



PLANTATION



TRANSPORTATION



CHIP MILL





2023#1

# TH-9799 SIAM FORESTRY CO., LTD SURVEILLANCE AUDIT

21 – 26 MAY 2024

FMUs : P.Charuenpon : H32



## THE SIAM FORESTRY CO.,LTD

Forest Management of Eucalyptus plantation in Thailand for the production of Eucalyptus hardwood timber. The SGS Forest Management Standard (AD33) for Thailand ,Version 07 of 2019 (24 July 2023 – 23 July 2028)

