

# TH-9799 SIAM FORESTRY CO., LTD SURVEILLANCE AUDIT

22 – 28 MAY 2023



## THE SIAM FORESTRY CO.,LTD

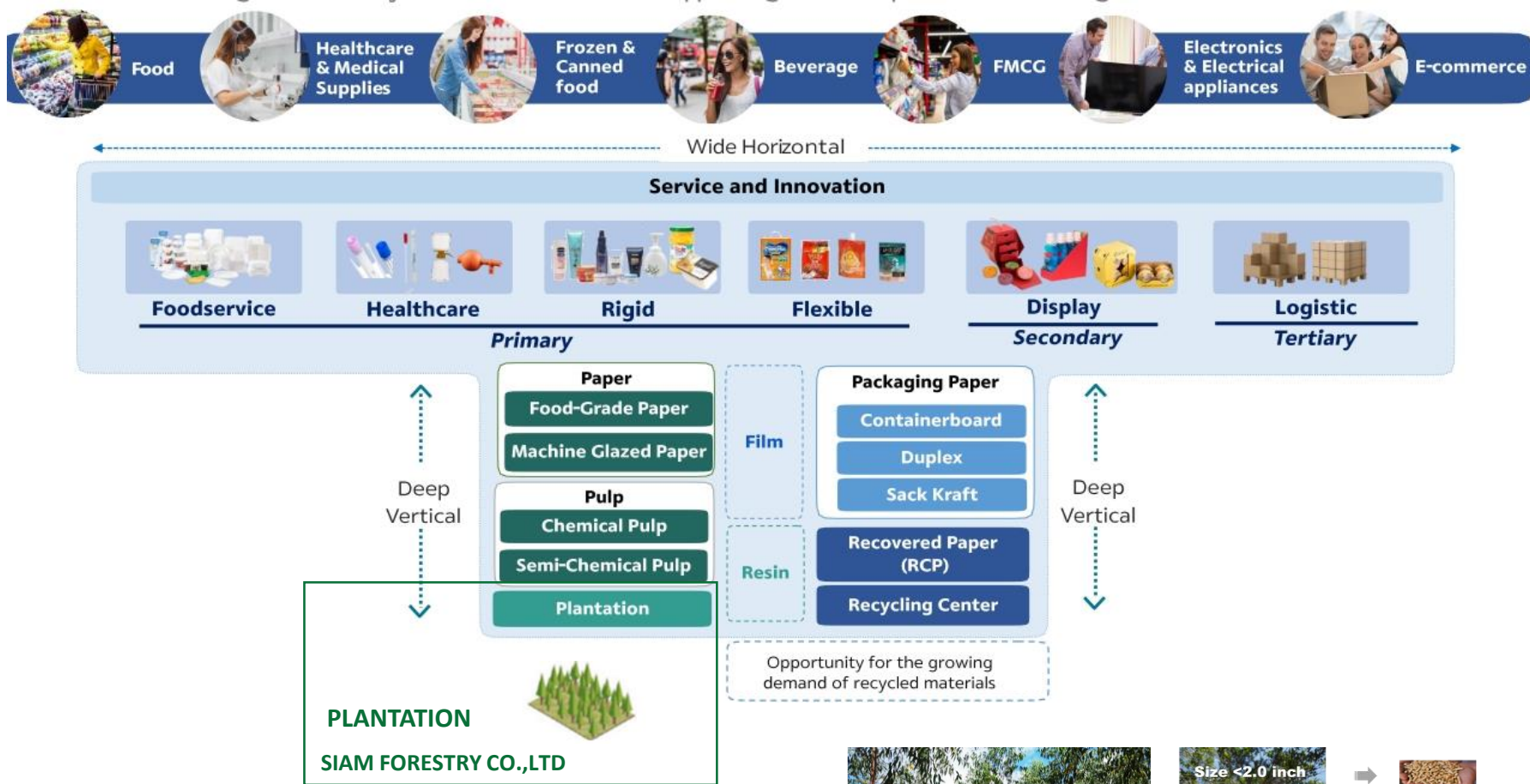
Forest Management of Eucalyptus plantation in Thailand for the production of Eucalyptus hardwood timber. The SGS Forest Management Standard (AD33) for Thailand ,Version 07 of 2019 (24 July 2023 – 23 July 2028)





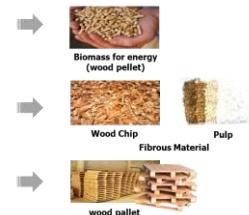
# FORESTRY BUSINESS FOR SUSTAINABILITY

- **SIAM FORESTRY Co.,Ltd** has implemented “**SUSTAINABLE VALUE CHAIN**” by Customers Experience Creation, the Innovation and Technology, as well as the Product Stewardship.



“FORESTRY BUSINESS FOR SUSTAINABILITY”

**FOREST** *The Heart of economy*  
**SUSTAINABLE RESOURCE**

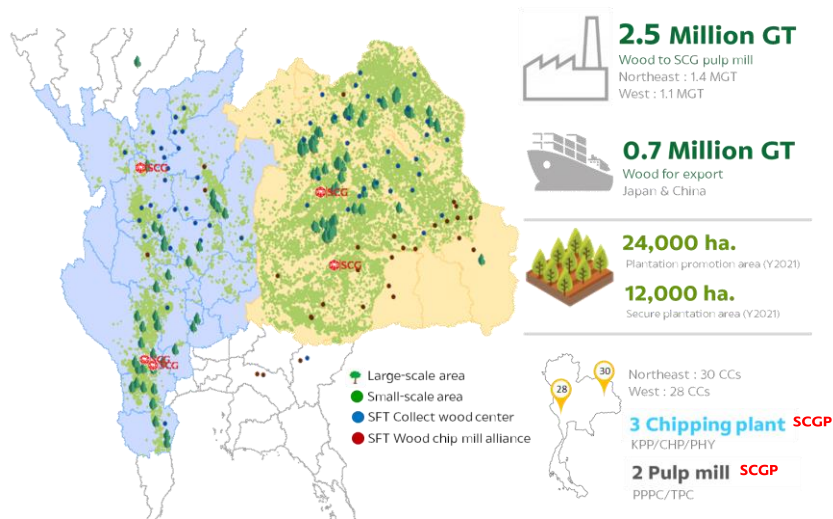


# FORESTRY BUSINESS FOR SUSTAINABILITY

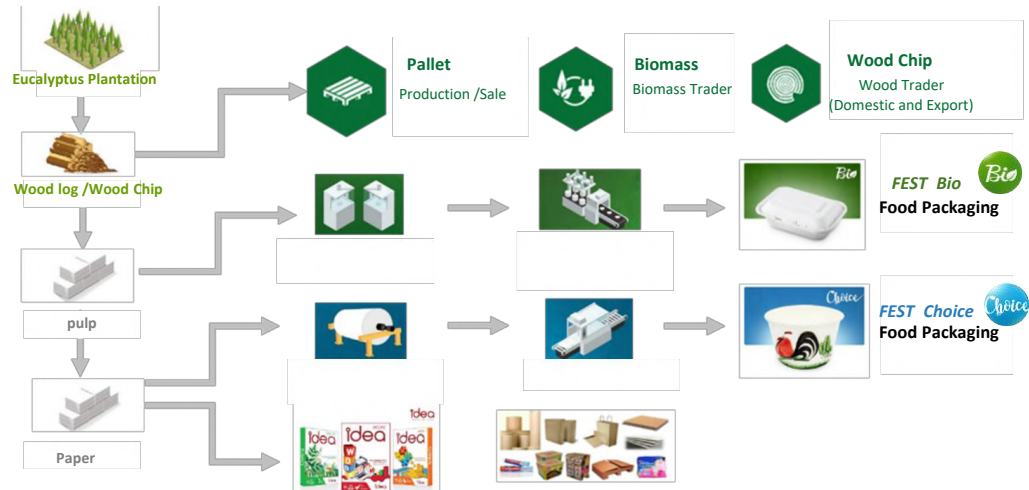
- SIAM FORESTRY Co.,Ltd has implemented “SUSTAINABLE VALUE CHAIN” by Customers Experience Creation, the Innovation and Technology, as well as the Product Stewardship.

## “SUSTAINABLE VALUE CHAIN of FORESTRY BUSINESS”

### Scope and location



### Products from Eucalyptus in SCGP, Packaging Business



### Products from Eucalyptus in Siam Forestry Co.,Ltd.

#### “PRODUCT , SERVICE and SOLUTION”



#### Land Solution :

- SCGP Investment (Land Rental 10-15 yrs.)
- Joint Venture
- Consulting



#### Environment :

- Reducing utilization from Forest.
- Reducing deforestation.
- Increasing O<sub>2</sub> .



Controlled Wood



SLIMF GROUP



PLANTATION

# THE SIAM FORESTRY CO.,LTD

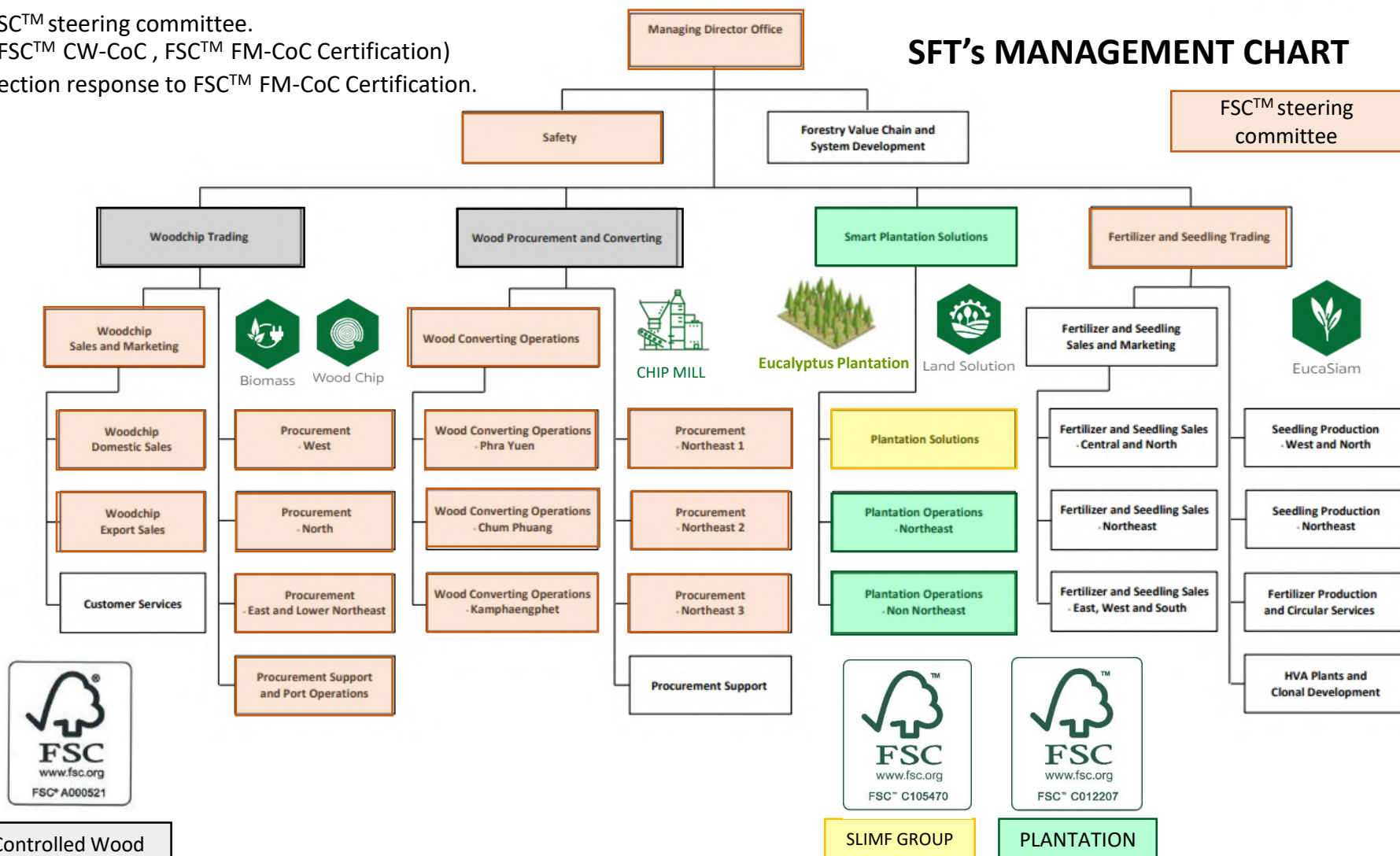
Forest Management of Eucalyptus plantation in Thailand for the production of Eucalyptus hardwood timber. The SGS Forest Management Standard (AD33) for Thailand ,Version 07 of 2019 (24 July 2023 – 23 July 2028)

เอกสารแนบท้ายประกาศที่ 17/2564

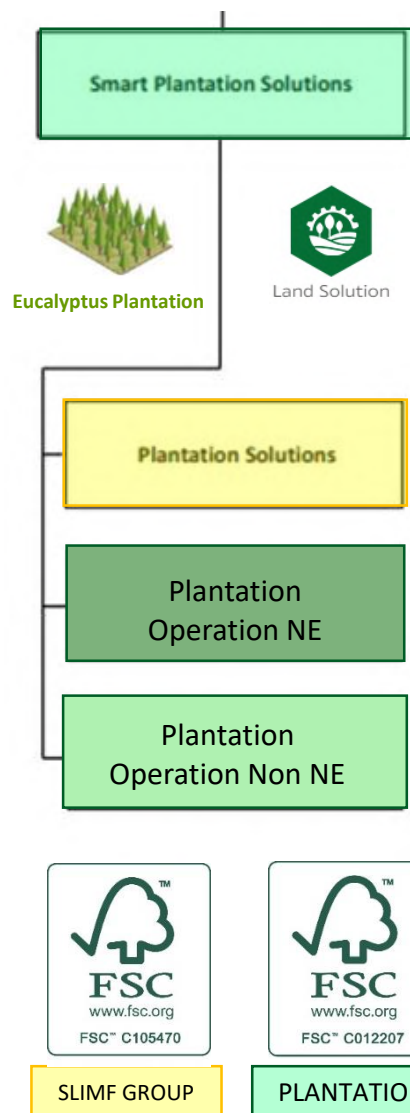
วันที่มีผล 1 ตุลาคม 2564

- FSC™ steering committee.  
(FSC™ CW-CoC , FSC™ FM-CoC Certification)
- Section response to FSC™ FM-CoC Certification.

## SFT's MANAGEMENT CHART

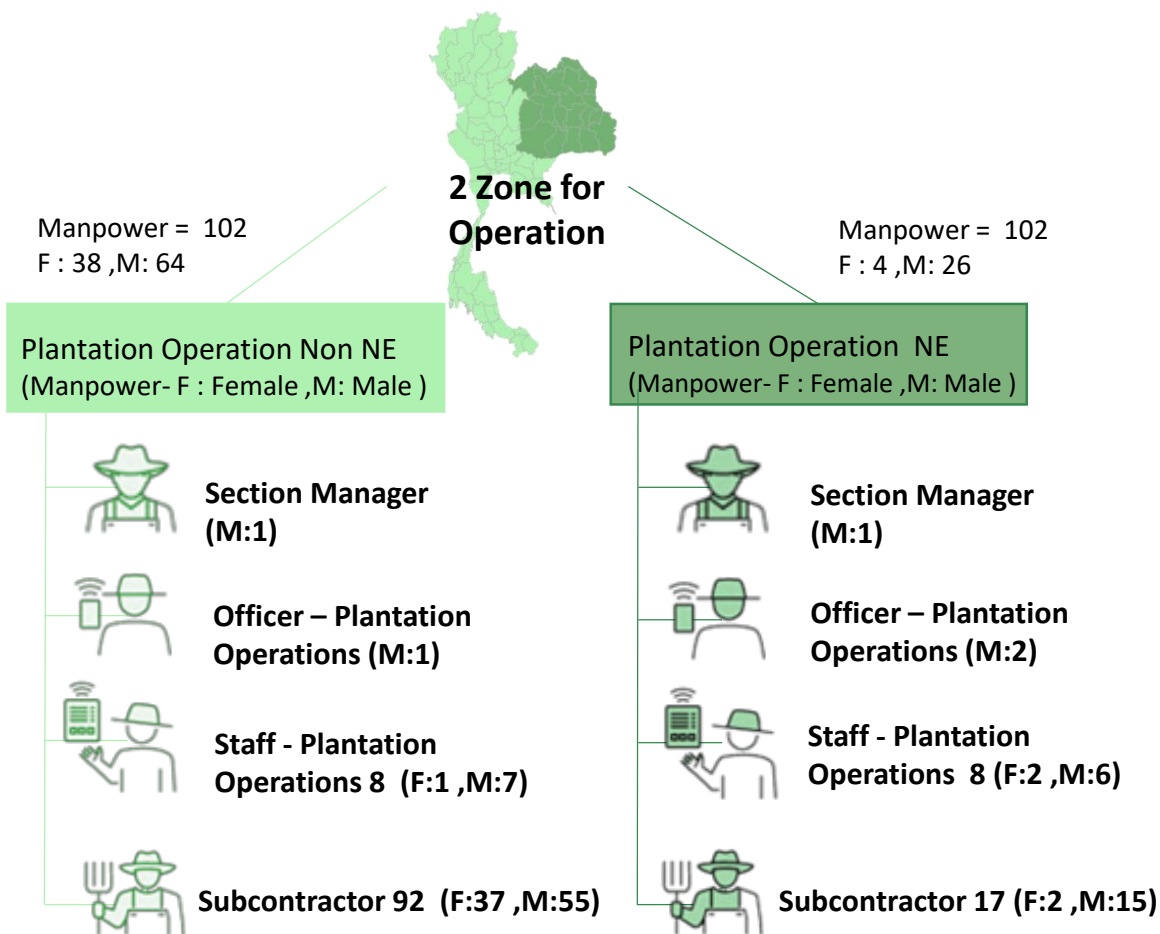


Forest Management of Eucalyptus plantation in Thailand for the production of Eucalyptus hardwood timber. The SGS Forest Management Standard (AD33) for Thailand ,Version 07 of 2019 (24 July 2023 – 23 July 2028)



## FSC™'s MANAGEMENT CHART

- Section response to FSC™ FM-CoC Certification.



\*\*\* The subcontractor is people around the plantation.



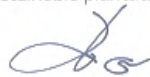
## **SUSTAINABLE PLANTATION MANAGEMENT POLICY**

Siam Forestry Company Limited, a subsidiary of SCG Packaging Public Company Limited (SCGP), is determined to operate a forest plantation business. To achieve the world's sustainable Development Goals (SDGs) by Plantation Solution to create satisfaction for customers and stakeholders with awareness of the importance of community / society, environment, occupational health and safety Therefore, a sustainable plantation management policy has been established. According to the principles and standards of FSC™ (Forest Stewardship Council) as follows

### **“Plantation planting, develops the community, and decrease the pollution”**

For achieves success operating sustainable plantation then set the ways as follow

1. **Decent work and economic growth** will require employment in the areas surrounding the plantation plots. Gender equality and employees, contractors and related parties Carry out activities of the plantation Must perform all activities in accordance with the principle and requirements according to FSC™ standards and must have good health and well-being.
2. **The land setting for plantation**, follow administration plantation system will have permanently must applying real estate right, correctly follow mark.
3. **Proceeding activity of plantation** system at emphasize to gain 3 sustainable benefits are including
  - 3.1 Economic, there is planning, manage, and control the constructing of plantation that give sustainable yield products, cutting and throw the wood, take care plantation after cutting straight to traditionally technical which be appropriate area, community, and environment.
  - 3.2 Social, there is an officer development/contractor, and related persons to have knowledge and ability in work practice, occupational health and safety including give a chance to local community participate in the activity of plantation by think over the right of the participant is proportional (gain and loss), study and effect to community, resolve appropriately and fair in disagreement with community.
  - 3.3 Environment There are plans, actions, controls and measures for surveillance and prevention, environmental and the utilization of life on Land to maintain ecological balance, and biodiversity of the plantation.
4. **Internal audit for sustainable plantation administration system**, at least 1 time per a year by internal auditor for do a presentation report to sustainable plantation system's committee of company.



( Mr.Mahasan Thieravarut )

Managing Director

10 January 2023

The Siam Forestry Co., Ltd., a subsidiary of SCGP, is determined to operate a forest plantation business. To achieve the SDGs by

## **“PLANTATION PLANTING, DEVELOPS THE COMMUNITY, AND DECREASE THE POLLUTION”**

for achieves success operating sustainable plantation then set the ways as follow ;

- 1.Decent work and economic growth .**
- 2.The land setting for plantation.**
- 3.Proceeding activity of plantation.**
- (Economic, Social and Environment)
- 4.Internal audit for sustainable plantation administration system.**



SLIMF GROUP



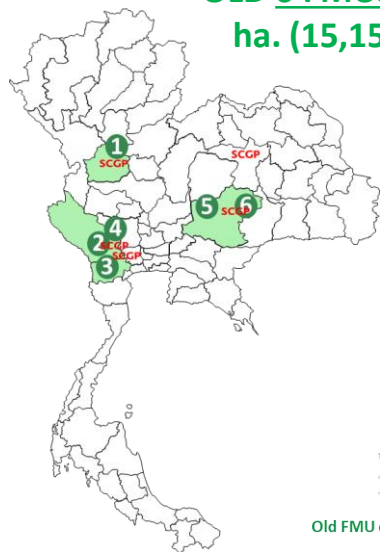
PLANTATION

# THE SIAM FORESTRY CO.,LTD

Forest Management of Eucalyptus plantation in Thailand for the production of Eucalyptus hardwood timber. The SGS Forest Management Standard (AD33) for Thailand ,Version 07 of 2019 (24 July 2023 – 23 July 2028)

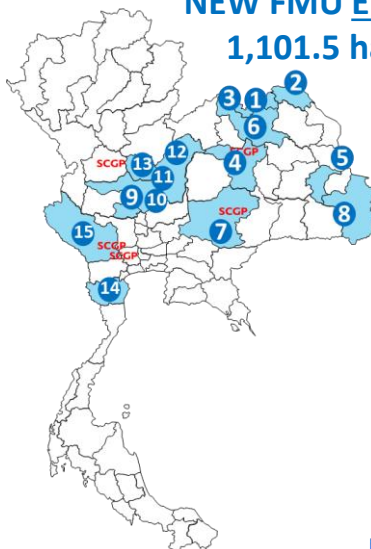
**TOTAL FOREST MANAGEMENT  
UNITS OF FSC™ - FM.**

**OLD 6 FMUS 2,424.3  
ha. (15,151.9 rai)**



Old FMU existing : 6 FMUs

**NEW FMU ENTRY 15 FMUS.  
1,101.5 ha (6,884.6 rai)**



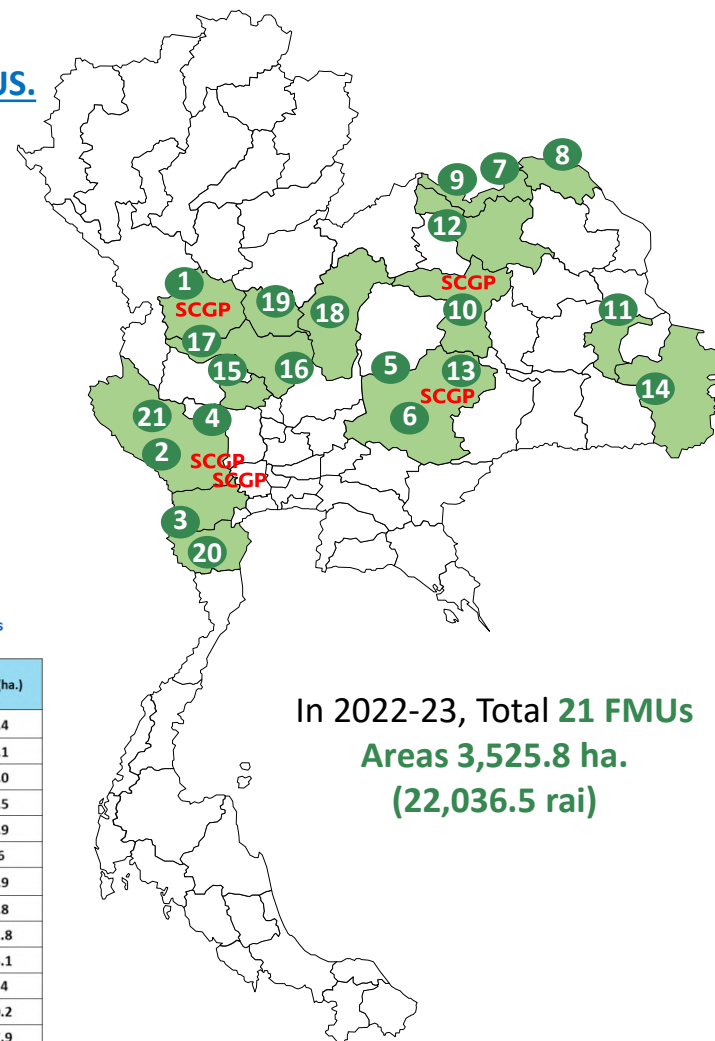
New FMU existing : 15 FMUs

FMU No.	Name /Identification	Location (near town or zone)	Forest type	Area (ha.)
1	KAMPHAENG PHET*	KAMPHAENG PHET PROVINCE	EUCALYPTUS PLANTATION	1,472.2
2	SOMCHAI K.	KANCHANABURI PROVINCE	EUCALYPTUS PLANTATION	430.7
3	PAK THO*	RATCHABURI PROVINCE	EUCALYPTUS PLANTATION	219.0
4	BAAN NGEUN	KANCHANABURI PROVINCE	EUCALYPTUS PLANTATION	100.4
5	APOT	NAKORN RATCHASIRIMA PROVINCE	EUCALYPTUS PLANTATION	80.4
6	CPAC - CHUMPUANG	NAKORN RATCHASIRIMA PROVINCE	EUCALYPTUS PLANTATION	121.6
Total Old 6 FMUs Areas (ha)				2,424.3

\* FMU : PAKTHO and KAMPHAENG PHET add conversation areas

- In 2023, Total 21 FMUs Areas 3,525.8 ha.  
- Old 6 FMUs existing 2,424.3 ha and New FMU entry 15 1,101.5 ha.

FMU No.	Name /Identification	Location (near town or zone)	Forest type	Area (ha.)
1	PRADIT	NONG KHAI PROVINCE	EUCALYPTUS PLANTATION	26.4
2	SKYLAND	BUENG KAN PROVINCE	EUCALYPTUS PLANTATION	49.1
3	KSL2	NONG KHAI PROVINCE	EUCALYPTUS PLANTATION	48.0
4	MOR PARK	KHON KAEN PROVINCE	EUCALYPTUS PLANTATION	36.5
5	SRI CHAI	YASOTHON PROVINCE	EUCALYPTUS PLANTATION	13.9
6	PONGSAK	UDON THANI PROVINCE	EUCALYPTUS PLANTATION	8.6
7	CHAIYING	NAKORN RATCHASIRIMA PROVINCE	EUCALYPTUS PLANTATION	67.9
8	DON MOD DAENG	UBON RATCHATHANI PROVINCE	EUCALYPTUS PLANTATION	67.8
9	TRA KOON	CHAINAT PROVINCE	EUCALYPTUS PLANTATION	112.8
10	PORJAREAN	NAKHON SAWAN PROVINCE	EUCALYPTUS PLANTATION	105.1
11	CHOOCHAI	NAKHON SAWAN PROVINCE	EUCALYPTUS PLANTATION	93.4
12	THAIGREEN	PHETCHABUN PROVINCE	EUCALYPTUS PLANTATION	280.2
13	LIAM	PHICHIT PROVINCE	EUCALYPTUS PLANTATION	117.9
14	NATTAWUT	PHETCHABURI PROVINCE	EUCALYPTUS PLANTATION	24.9
15	TIPPRAPA	KANCHANABURI PROVINCE	EUCALYPTUS PLANTATION	49.0
Total New 15 FMUs Areas (ha)				1,101.5



**In 2022-23, Total 21 FMUs  
Areas 3,525.8 ha.  
(22,036.5 rai)**

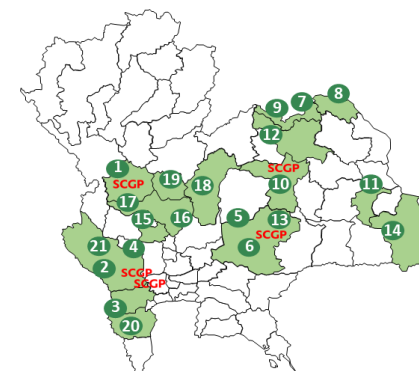
# THE SIAM FORESTRY CO.,LTD

Forest Management of Eucalyptus plantation in Thailand for the production of Eucalyptus hardwood timber. The SGS Forest Management Standard (AD33) for Thailand ,Version 07 of 2019 (24 July 2023 – 23 July 2028)

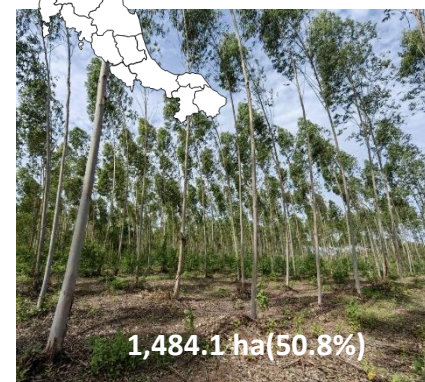
## 21 FMUs' location, plantation type, and land tenure.

No.	FMUs	Location (Province or zone)	Zone	FMUs new	Plantation type	Rotation	Land tenure	Total (ha)
1	60NKamphaengphet	Kamphengphet	North	Old	Eucalyptys	Coppice 3 <sup>rd</sup>	Asset	1,472.2
2	59WSomchai K	Kanchanaburi	West	Old	Eucalyptys	1 <sup>st</sup> Rotation	Lease	430.7
3	59WPaktho	Ratchaburi	West	Old	Eucalyptys	Coppice 3 <sup>rd</sup>	Asset	219.0
4	62WBaan Ngeun	Kanchanaburi	West	Old	Eucalyptys	Coppice 3 <sup>rd</sup>	Lease	100.4
5	61NEAPOT	Nakornratchasima	NE	Old	Eucalyptys	Coppice 2 <sup>nd</sup>	Lease	80.5
6	59NECPAC-Chumpuang	Nakornratchasima	NE	Old	Eucalyptys	Coppice 2 <sup>nd</sup>	Lease	121.6
7	62NEPradit	Nongkhai	NE	New	Eucalyptys	1 <sup>st</sup> Rotation	Lease	26.4
8	62NESkyland	Buengkan	NE	New	Eucalyptys	1 <sup>st</sup> Rotation	Lease	49.1
9	62NEKSL2	Nongkhai	NE	New	Eucalyptys	1 <sup>st</sup> Rotation	Lease	48.0
10	62NEMorpark	Khonkaen	NE	New	Eucalyptys	1 <sup>st</sup> Rotation	Lease	36.5
11	62NESrichai	Yasothon	NE	New	Eucalyptys	1 <sup>st</sup> Rotation	Lease	13.9
12	61NEPongsak	Sribunreung	NE	New	Eucalyptys	1 <sup>st</sup> Rotation	Lease	8.6
13	63NEChaiying	Nakornratchasima	NE	New	Eucalyptys	1 <sup>st</sup> Rotation	Lease	67.9
14	62NEDon mod daeng	Ubonratchathani	NE	New	Eucalyptys	1 <sup>st</sup> Rotation	Lease	67.8
15	63NTra koon	Chainat	North	New	Eucalyptys	1 <sup>st</sup> Rotation	Lease	112.8
16	61NPorjareanpon	Nakornsawon	North	New	Eucalyptys	1 <sup>st</sup> Rotation	Lease	105.1
17	61NChoochai	Chainat	North	New	Eucalyptys	1 <sup>st</sup> Rotation	Lease	93.4
18	61NThaigreen	Phetchabun	North	New	Eucalyptys	1 <sup>st</sup> Rotation	Lease	280.2
19	62NLiam	Phichit	North	New	Eucalyptys	1 <sup>st</sup> Rotation	Lease	117.9
20	61NNattawut	Phetchaburi	West	New	Eucalyptys	1 <sup>st</sup> Rotation	Lease	24.9
21	61NTimpapa	Kanchanaburi	West	New	Eucalyptys	1 <sup>st</sup> Rotation	Lease	49.0

- Zone West and North areas is 3,005.5 ha (85.2%)
- Zone NE areas is 520.3 ha (14.8%)



- In 2022-23, Total **21**  
FMUs Areas **3,525.8 ha.**



Coppice 3<sup>rd</sup> : Kamphengphet .

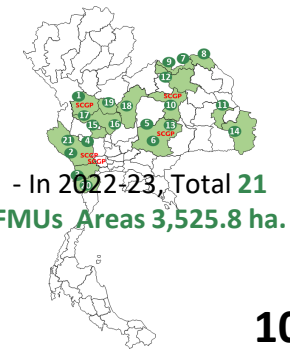


1<sup>st</sup> Rotation : Porjareanpon.

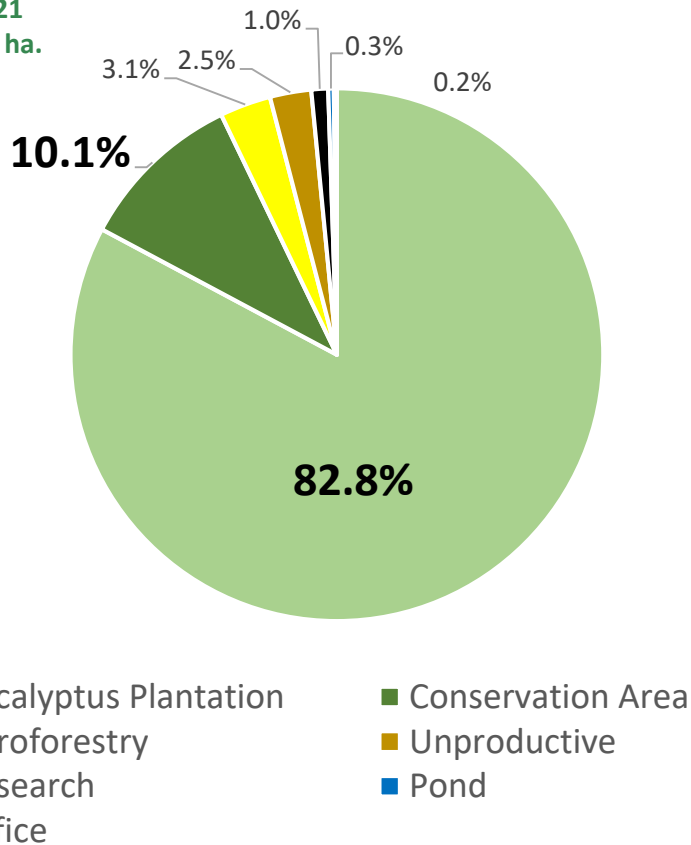


# THE SIAM FORESTRY CO.,LTD

Forest Management of Eucalyptus plantation in Thailand for the production of Eucalyptus hardwood timber. The SGS Forest Management Standard (AD33) for Thailand ,Version 07 of 2019 (24 July 2023 – 23 July 2028)



## Land use of 21 FMUs as Following :



- Other Land use 142.6 (4.0%) :  
(Office ,Pond and Unproductive (Road))



Eucalyptus Plantation 2,919.4 ha (18,246.3 rai)



Conservation Areas 354.4 ha. (2,214.9 rai)



Secondary Mixed Deciduous Forest A-D



Agriculture 109.4 ha (683.6 rai) (plants rice for donate)

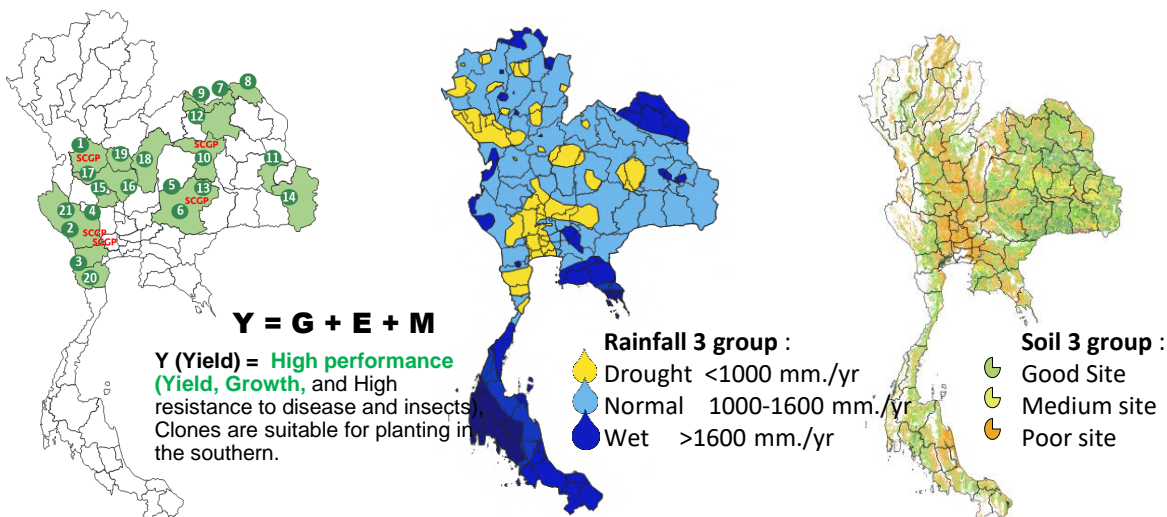


# THE SIAM FORESTRY CO.,LTD

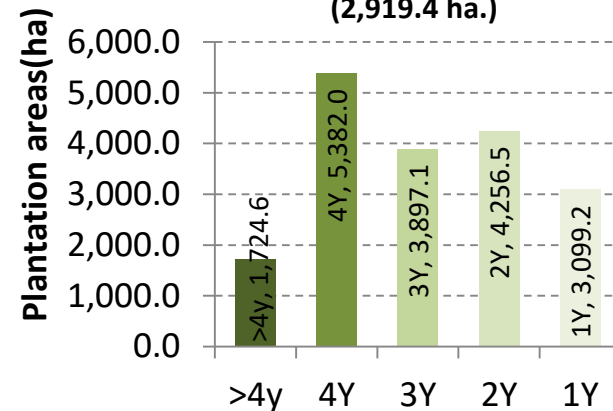
Forest Management of Eucalyptus plantation in Thailand for the production of Eucalyptus hardwood timber. The SGS Forest Management Standard (AD33) for Thailand ,Version 07 of 2019 (24 July 2023 – 23 July 2028)



## Eucalyptus Plantation in 2022-23 (82.8%total FMUs):



Areas separated by age class (ha)  
(2,919.4 ha.)



## Eucalyptus Hybrids and Clone Existing in plantation ( 12 clone)

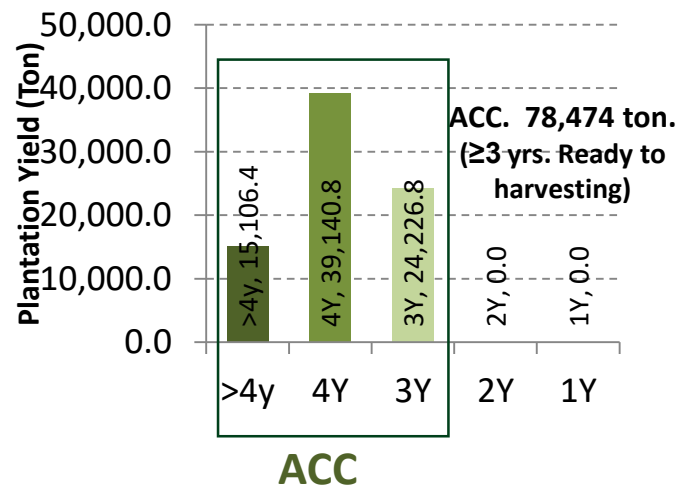
Hybrids	Growth	Pulp yield	Density	Plantation disease	Nursery disease	Gall insect	Site	Clone Code
C x C	xx	xx	xxx	xx	xxx	xx	Drought to normal	P6
C x U	xxx	xx	xxx	x	x	xx	Drought to normal	H4
C x P	xxx	xxx	xx	xx	xxx	xx	Normal to wet	H26,H36,H38,H46
(CxU)xU	xxx	xx	xx	xx	xx	xx	Normal to wet	H44
(CxG)x(CxP)	xx	xx	xx	xx	x	xxx	Normal to wet	H32,H42
(PxC)xC	xxx	xx	xx	xx	xx	xxx	Drought to normal	613R1,525R1*
PxU	xxx	xxx	xx	xx	xx	xxx	Wet	617R2*

C : E. camaldulensis ,U : E. urophylla , E. pellita and G :E. grandis

X : Low ,XX :moderate and XXX : Highly

\* New coming

Summary Annual Allowable Cutting (Ton)





# THE SIAM FORESTRY CO.,LTD

Forest Management of Eucalyptus plantation in Thailand for the production of Eucalyptus hardwood timber. The SGS Forest Management Standard (AD33) for Thailand ,Version 07 of 2019 (24 July 2023 – 23 July 2028)



PLANTATION



TRANSPORTATION



CHIP MILL

## FSC™ Management Plan for 21 FMUs

ประเภทกิจกรรม	กิจกรรม*	จุดควบคุม		การดำเนินการ														
		รายการ	หน่วย	รอบตัดพื้นที่ 1					รอบตัดพื้นที่ 2					รอบตัดพื้นที่ 3				
				ปีที่ 1	ปีที่ 2	ปีที่ 3	ปีที่ 4	ปีที่ 5	ปีที่ 1	ปีที่ 2	ปีที่ 3	ปีที่ 4	ปีที่ 5	ปีที่ 1	ปีที่ 2	ปีที่ 3	ปีที่ 4	ปีที่ 5
				2564	2565	2566	2567	2568	2569	2570	2571	2572	2573	2574	2575	2576	2577	2578
ด้านเศรษฐกิจ	1.ตัดไม้	น้ำหนัก	ตัน	16,161	21,753	42,661	80,588	159,418	127,058	124,568	161,650	180,000	180,000	261,773	261,773	261,773	261,773	261,773
	Plantation Yield at 5 yrs (Ton) harvest in 2021-26 (planting 2015-21)	น้ำหนัก	ตัน/ไร่/ปี	8.8	9.0	13.1	15.4	18.0	20.6	20.6	20.6	20.6	20.6	20.6	20.6	20.6	20.6	20.6
(Economic)	2.พื้นที่ทั้งหมด	เนื้อที่	ไร่	12,333	15,152	22,036	29,376	46,374	55,041	64,449	71,087	78,703	86,318	93,934	101,550	109,166	116,782	124,397
	3.ขยายพื้นที่เพิ่ม**	เนื้อที่	ไร่	0	1,890	6,885	7,339	16,999	8,667	9,408	6,638	7,616	7,616	7,616	7,616	7,616	7,616	7,616
	4.ดูแล บำรุง รักษา***	เนื้อที่	ไร่	11,463	13,355	19,423	25,892	40,874	48,513	56,805	62,656	69,368	76,081	82,793	89,506	96,218	102,931	109,643
	5.เพิ่มความหลากหลายสายพันธุ์และเพิ่มผลผลิตต่อพื้นที่*	สายพันธุ์/พื้นที่	สายพันธุ์	2	2	2	2	2	2	2	2	2	2	2	2	2	2	2
	6.Net cash flow (หลังตัดไม้)	รายงาน	ฉบับ	1	1	1	1	1	1	1	1	1	1	1	1	1	1	1
ด้านสังคม / ชุมชน	1.สำรวจข้อมูลชุมชนรอบสวนไม้ ผู้มีส่วนได้ส่วนเสีย	รายงาน	ฉบับ		1		1		1		1		1		1		1	
	2.มีส่วนร่วมกับการชุมชน / สนับสนุนกิจกรรม	รายงาน	ฉบับ	1	1	1	1	1	1	1	1	1	1	1	1	1	1	1
	3.ประเมินผลกระทบด้านสังคม (รอบ 4 ปี)	รายงาน	ฉบับ		1				1				1				1	
	4.การแก้ไข-ป้องกันผลกระทบ / ข้อเสนอแนะ ข้อร้องเรียน	รายงาน	ฉบับ	1	1	1	1	1	1	1	1	1	1	1	1	1	1	1
	5.การสร้างงาน และสร้างรายได้ รอบสวนไม้	รายงาน	ฉบับ	1	1	1	1	1	1	1	1	1	1	1	1	1	1	1
(Social / Community)	1.สำรวจข้อมูล,การใช้ประโยชน์พื้นที่อนุรักษ์ / สวนไม้	รายงาน	ฉบับ	1	1	1	1	1	1	1	1	1	1	1	1	1	1	1
	2.ประเมินผลกระทบสิ่งแวดล้อม (หลังทำไม้)	รายงาน	ฉบับ	1	1	1	1	1	1	1	1	1	1	1	1	1	1	1
	3.สนับสนุนกิจกรรมสิ่งแวดล้อมรอบสวนไม้	รายงาน	ฉบับ	1		1		1		1		1		1		1		1
	4.กิจกรรมในพื้นที่อนุรักษ์ (Annual plan)	รายงาน	ฉบับ	1	1	1	1	1	1	1	1	1	1	1	1	1	1	1
	5.การติดตามตรวจสอบคุณภาพดินและน้ำ ****	รายงาน	ฉบับ	1		1		1		1		1		1		1		1
	6.ความหลากหลายทางชีวภาพ	รายงาน	ฉบับ		1		1		1		1		1		1		1	
	7.ส่งเสริมและสนับสนุน เครือข่ายการฟื้นฟูระบบนิเวศ	รายงาน	ฉบับ		1	1	1	1	1	1	1	1	1	1	1	1	1	1
(Environment)	1.การตรวจติดตามภายในระบบ FSC™	รายงาน	ฉบับ	1	1	1	1	1	1	1	1	1	1	1	1	1	1	1
	2.การทบทวนฝ่ายบริหาร	รายงาน	ฉบับ	1	1	1	1	1	1	1	1	1	1	1	1	1	1	1
	3.การปรับปรุงระบบ-เพิ่มผลผลิต	รายงาน	ฉบับ	1	1	1	1	1	1	1	1	1	1	1	1	1	1	1
	4.การฝึกอบรม	รายงาน	ฉบับ	1	1	1	1	1	1	1	1	1	1	1	1	1	1	1
(others)																		

\* แผนสามารถ ปรับตามสถานการณ์ที่เปลี่ยนแปลง เช่น การระบาดของโรค สภาพอากาศที่เปลี่ยนแปลง หรือ สภาพเศรษฐกิจ เป็นต้น

\*\*\* แผนการดูแล ขึ้นกับพื้นที่การใช้ประโยชน์ และพื้นที่ปลูกเมื่อ 5 ปี ก่อนหน้า ในการ (ตามพื้นที่เข้าได้)

\*\* แผนการเพิ่มขึ้น ขึ้นกับพื้นที่ปลูกเมื่อ 5 ปี ก่อนหน้า ในการ (ตามพื้นที่เข้าได้)

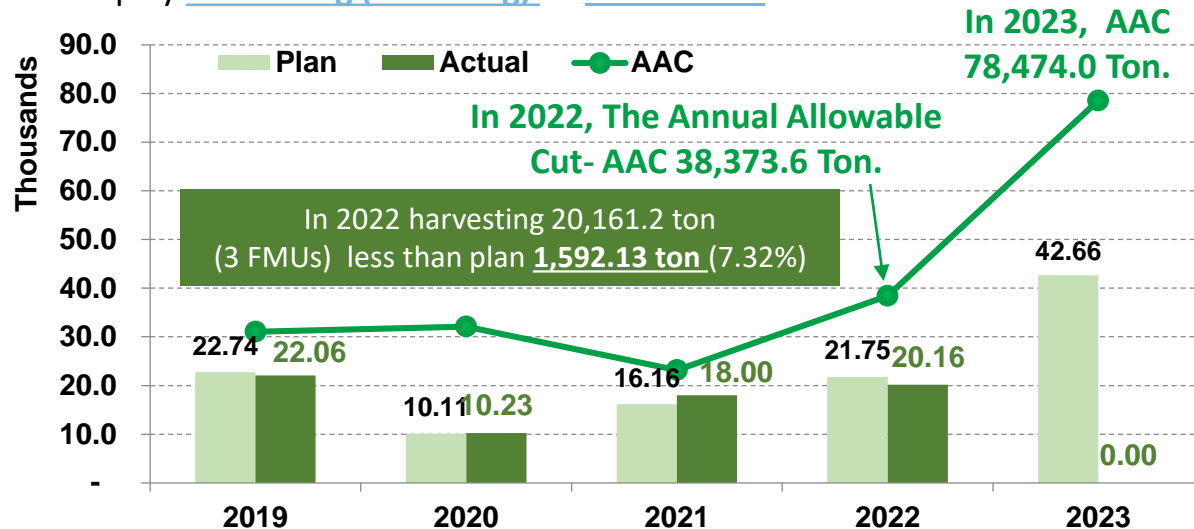
\*\*\* แผนการเก็บเกี่ยวต้องพิจารณาตามพื้นที่ที่มีความเสี่ยง

# THE SIAM FORESTRY CO.,LTD

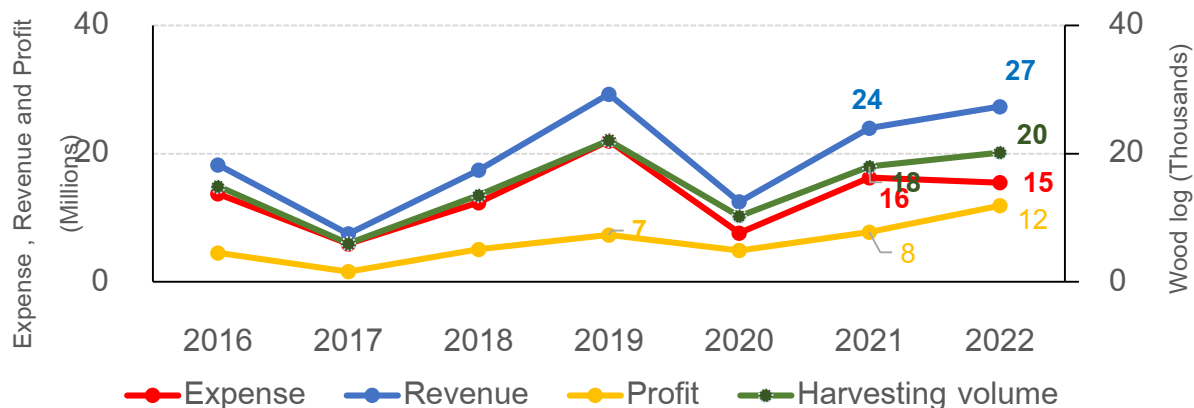
Forest Management of Eucalyptus plantation in Thailand for the production of Eucalyptus hardwood timber. The SGS Forest Management Standard (AD33) for Thailand ,Version 07 of 2019 (24 July 2023 – 23 July 2028)

- Updated progress activity for **Economy 2022 -2023.**

Display **Harvesting (Wood log)** in **2019- 2023**.



Display **Wood log harvesting** and **financial 2019-2021**



**In 2022 :**

- Harvesting volume 20,161 (Ton)
- Revenue 27.34 Mb and Expense 15.47 Mb.
- **Profit 11.86 Mb.**

QA Log size index





# THE SIAM FORESTRY CO.,LTD

Forest Management of Eucalyptus plantation in Thailand for the production of Eucalyptus hardwood timber. The SGS Forest Management Standard (AD33) for Thailand ,Version 07 of 2019 (24 July 2023 – 23 July 2028)



- Updated progress activity for **Economy 2022 -2023**

## Economy :

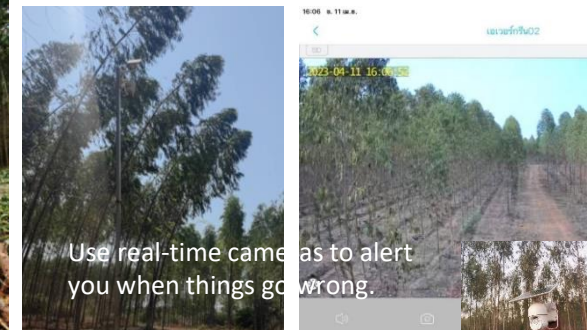
Economic, there is planning, manage, and control the constructing of plantation that give sustainable yield products, cutting and throw the wood, take care plantation after cutting straight to traditionally technical which be appropriate area, community, and environment.

- Application of the suitable silvicultural system in plantation management for each area (Clone and Site).
- Intensives plantation management and technology application for the efficiency.



Planting in the dry season and Increase survival rate

- Application of the suitable silvicultural system in plantation management





# THE SIAM FORESTRY CO.,LTD

Forest Management of Eucalyptus plantation in Thailand for the production of Eucalyptus hardwood timber. The SGS Forest Management Standard (AD33) for Thailand ,Version 07 of 2019 (24 July 2023 – 23 July 2028)

- Updated progress activity for Environment and **Social 2022 -2023**



PLANTATION

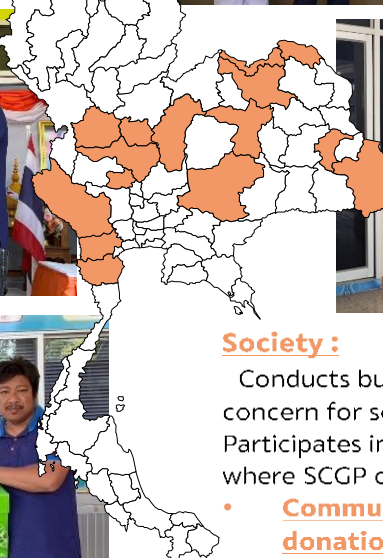


TRANSPORTATION



CHIP MILL

**Society :** **Community investment and donation.**



## **Society :**

Conducts business with ethic and concern for social responsibility. Participates in Improving the quality of life where SCGP operates.

- **Community investment and donation.**
- Labor practices and human rights.
- Human resources and human capital development.
- Health and safety.
- Stakeholder engagement.



- Support **traditional** and **donation** for stockholder around the plantation.



# THE SIAM FORESTRY CO.,LTD

Forest Management of Eucalyptus plantation in Thailand for the production of Eucalyptus hardwood timber. The SGS Forest Management Standard (AD33) for Thailand ,Version 07 of 2019 (24 July 2023 – 23 July 2028)



- Updated progress activity for Environment and **Social 2022 -2023**

## • Stakeholder engagement. Society :

- **Social impact evaluations** and consultation by **Interview with locals** around the plantation.

**Society :**

- Conducts business with ethic and concern for social responsibility. Participates in Improving the quality of life where SCGP operates.
- Community investment and donation.
- Labor practices and human rights.
- Human resources and human capital development.
- Health and safety.
- Stakeholder engagement.**

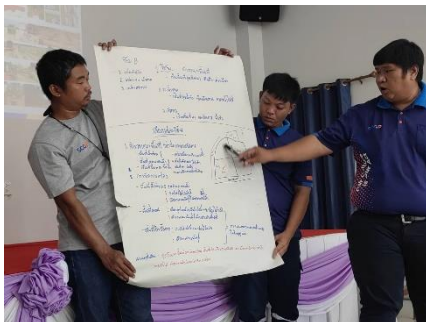


Forest Management of Eucalyptus plantation in Thailand for the production of Eucalyptus hardwood timber. The SGS Forest Management Standard (AD33) for Thailand ,Version 07 of 2019 (24 July 2023 – 23 July 2028)



- Updated progress activity for Environment and **Social 2022 -2023**

**Society :** **Human resources and human capital development.**



### Society :

Conducts business with ethic and concern for social responsibility. Participates in Improving the quality of life where SCGP operates.

- Community investment and donation.
- Labor practices and human rights.
- Human resources and human capital development.
- Health and safety.
- Stakeholder engagement.



- Support and provide training competency for subcontractors.



# THE SIAM FORESTRY CO.,LTD

Forest Management of Eucalyptus plantation in Thailand for the production of Eucalyptus hardwood timber. The SGS Forest Management Standard (AD33) for Thailand ,Version 07 of 2019 (24 July 2023 – 23 July 2028)

- Updated progress activity for Environment and **Social 2022 -2023**



## Society : Health and safety.



First aid training



First aid training

- Support and provide **training for Workers about Health and Safety** and **support annual physical examinations** and **build safety awareness.**



First aid training



### Society :

Conducts business with ethic and concern for social responsibility. Participates in Improving the quality of life where SCGP operates.

- Community investment and donation.
- Labor practices and human rights.
- Human resources and human capital development.
- **Health and safety.**
- Stakeholder engagement.



## Appreciate and build a safety culture

- Health and Safety : 0 accident.

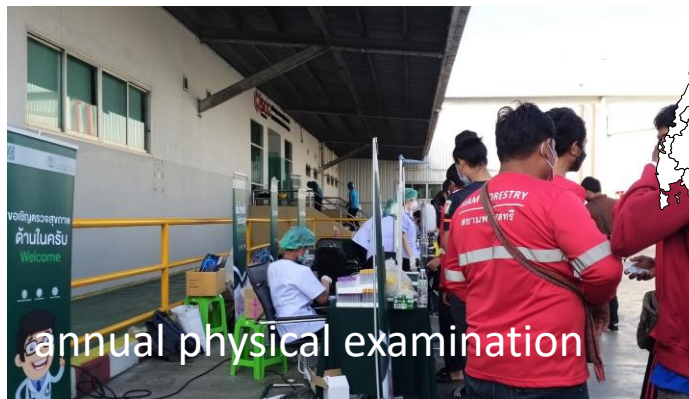
Daily checking before and After operation.

- Reduce unsafe Action and Daily communication.

- Safety daily and Daily target : Remind to "Care for Self"



- Reduce unsafe Action and Daily communication.



annual physical examination



# THE SIAM FORESTRY CO.,LTD

Forest Management of Eucalyptus plantation in Thailand for the production of Eucalyptus hardwood timber. The SGS Forest Management Standard (AD33) for Thailand ,Version 07 of 2019 (24 July 2023 – 23 July 2028)

- Updated progress activity for

**Environment and Social 2022 -2023**

## Environment :

Commits to conservation of environment and natural resources ,using resource wisely and maintaining ecological balance.

- Energy and Climate change.
- Water management.
- Waste management.
- **Biodiversity and ecosystem.**
- Environmentally friendly products and services.
- Logistics management.
- **Life on land (Protect ,restore and promote use of terrestrial ecosystems, sustainably manage forests.**

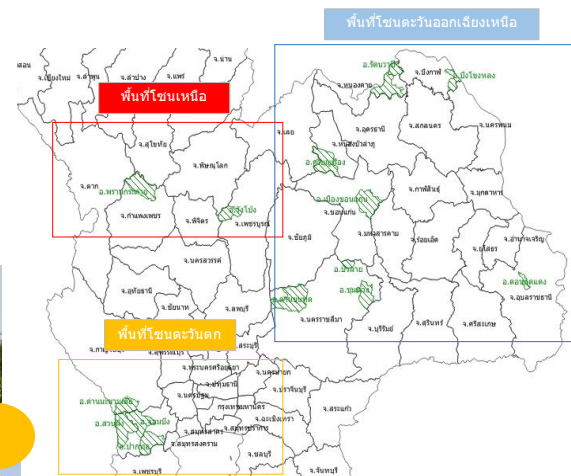
**High conservation value area (HCV) assessment.**



## Environment :

- **Life on land (Protect ,restore and promote use of terrestrial ecosystems, sustainably manage forests.**

แผนที่ ตำแหน่งแปลง ทั้ง 3 โซน (ตะวันออกเฉียงเหนือ ,ตะวันตก และเหนือ)



แปลงแปลงปลูกสกลชัย อ.ปากทอ จ.ราชบุรี (FMUs :Pak t) แปลงสวนส้ม อ.สวนส้ม จ.ราชบุรี (FMUs :Pak tho)



แปลงปากทอ อ.ปากทอ จ.ราชบุรี (FMUs :Pak tho) แปลงเอสเคด อ.ด้ามระชาญเตี้ย จ.กาญจนบุรี (FMUs :Somc)



แปลง KSL อ.โพธิ์ชัย จ.หนองคาย (Skylan)



แปลงดอนมดแดง อ.ดอนมดแดง จ.อุบลราชธานี



แปลงชัยยั้ง อ.บัวลาย จ.นครราชสีมา (Chaiying63)



แปลง ม.ภาค อ.เมือง จ.ขอนแก่น (Mor Park)



แปลง CPAC อ.ชุมพล จ.นครราชสีมา (FMUs : CPAC)



แปลง APOT อ.ด่านขุนทด จ.นครราชสีมา (FMUs : APOT)

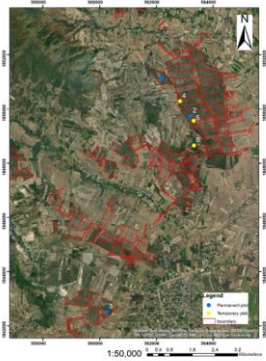




# THE SIAM FORESTRY CO.,LTD

Forest Management of Eucalyptus plantation in Thailand for the production of Eucalyptus hardwood timber. The SGS Forest Management Standard (AD33) for Thailand ,Version 07 of 2019 (24 July 2023 – 23 July 2028)

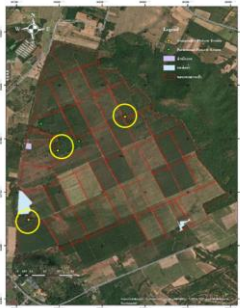
- Updated progress activity for  
**Environment** and Social **2022 -2023**



● Permanent plot (20x50 m.)



Conservation areas in  
**KPP plantation 149 ha.**

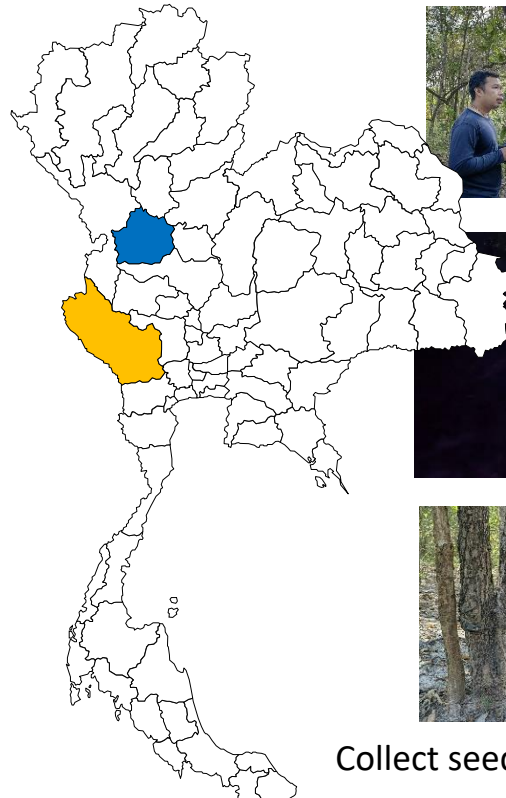


★ Permanent plot (20x50 m.)



Conservation areas in  
**Somchai K plantation 17.5 ha.**

- Increase the diversity and density of species in conservation areas and manage food and animal nests.



Nursery in **KPP plantation**



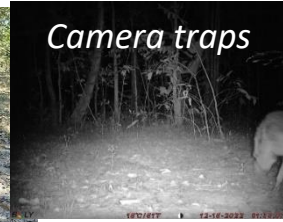
Nursery in **Somchai plantation**



## Environment :

**Life on land (Protect ,restore and promote use of terrestrial ecosystems, sustainably manage forests.**

### 1. Flora Biodiversity :



### 2. Insect Biodiversity :



Collect seed and produce for planting in conservation areas.



# THE SIAM FORESTRY CO.,LTD

Forest Management of Eucalyptus plantation in Thailand for the production of Eucalyptus hardwood timber. The SGS Forest Management Standard (AD33) for Thailand ,Version 07 of 2019 (24 July 2023 – 23 July 2028)

- Updated progress activity for **Environment** and Social **2022 -2023**

## **Environment :**

Commits to conservation of environment and natural resources ,using resource wisely and maintaining ecological balance.

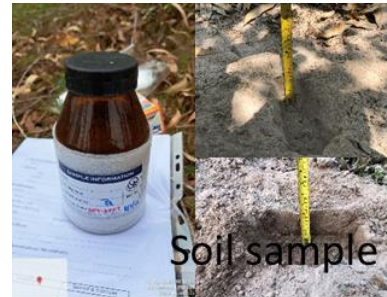
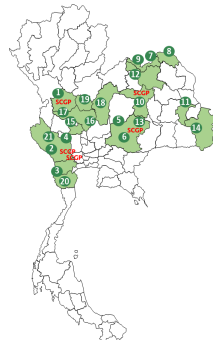
- Energy and Climate change.
- **Water management.**
- **Waste management.**
- Biodiversity and ecosystem.
- Environmentally friendly products and services.
- Logistics management.
- **Life on land (Protect ,restore and promote use of terrestrial ecosystems,sustainably manage forests.**



- **Hazardous waste identified, separated and appropriately disposed** for operate in plantation by provide Station Temporary.



- OJT Hazardous waste identified, separated.



-Collected soil and water sample sent to lab.



## **Environment :** **Waste management.**



2023#1

# TH-9799 SIAM FORESTRY CO., LTD SURVEILLANCE AUDIT

22 – 28 MAY 2023

FMUs : P.Charuenpon : H32



## THE SIAM FORESTRY CO.,LTD

Forest Management of Eucalyptus plantation in Thailand for the production of Eucalyptus hardwood timber. The SGS Forest Management Standard (AD33) for Thailand ,Version 07 of 2019 (24 July 2023 – 23 July 2028)

